

WESTBOROUGH MASSACHUSETTS
Architectural
Walking Tours
With Music!
1717  2017

Walk #2: Archeology Primer; Westborough's Pre-History

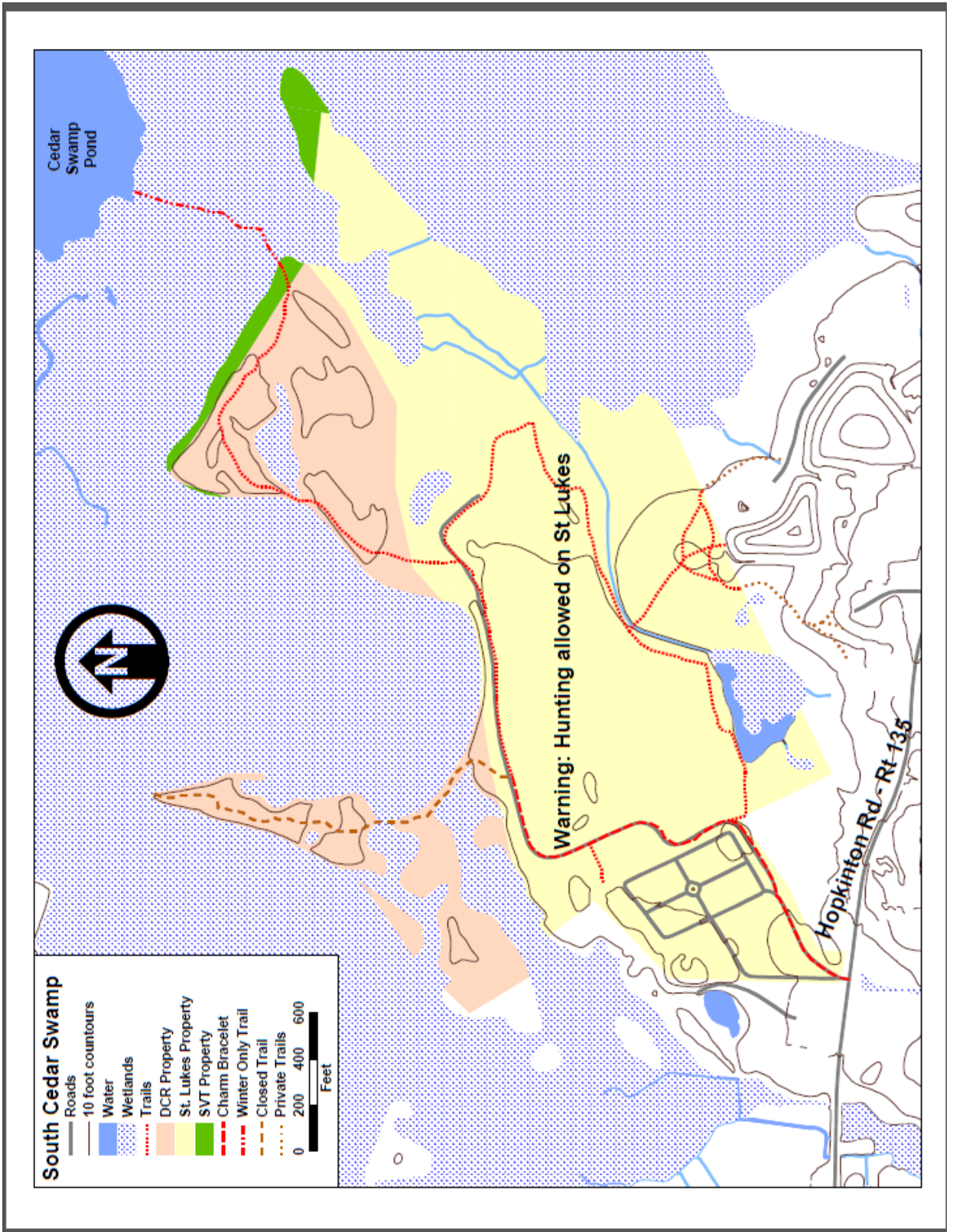
Guides: R. Christopher Noonan, Historic Preservationist / Historic Real Estate Specialist
Luanne Crosby, Troubadour/Songwriter/Singer

Guest Speaker: Michelle Gross, Archeologist/Anthropologist

February 2017

*For further or follow-up information regarding this tour, contact
rcn@preserve-inc.com / 508-473-4884 and luanne@luannecrosby.com*







Town of Westborough Water Resources Watersheds

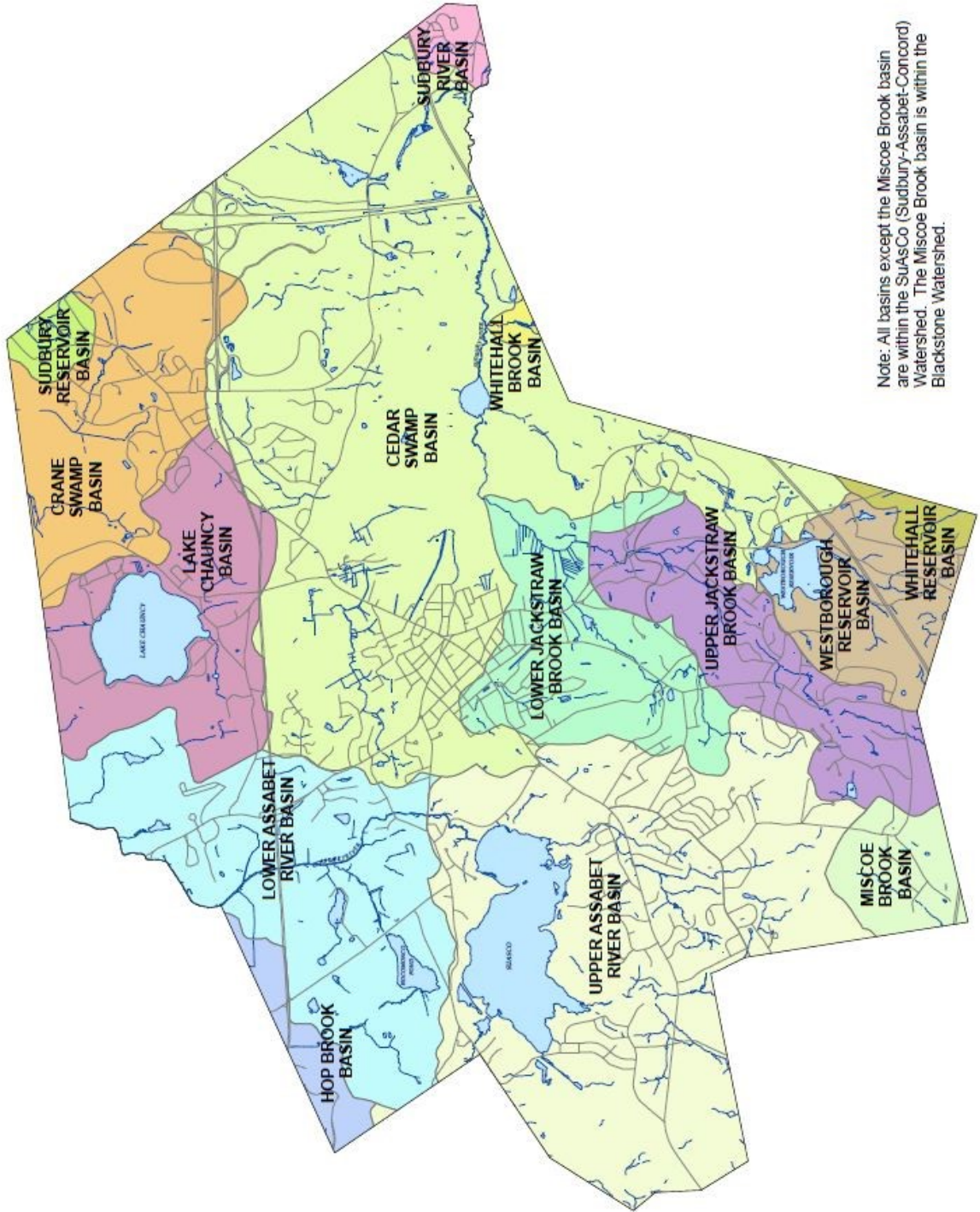
Watershed Drainage Basins

- Cedar Swamp
- Crane Swamp
- Hop Brook
- Lake Chauncy
- Lower Assabet River
- Lower Jackstraw Brook
- Miscoe Brook
- Sudbury Reservoir
- Sudbury River
- Upper Assabet River
- Upper Jackstraw Brook
- Westborough Reservoir
- Whitehall Brook
- Whitehall Reservoir

Watershed Drainage Basins Source: MassGIS, 2007
United States Geological Survey, 1:24,000

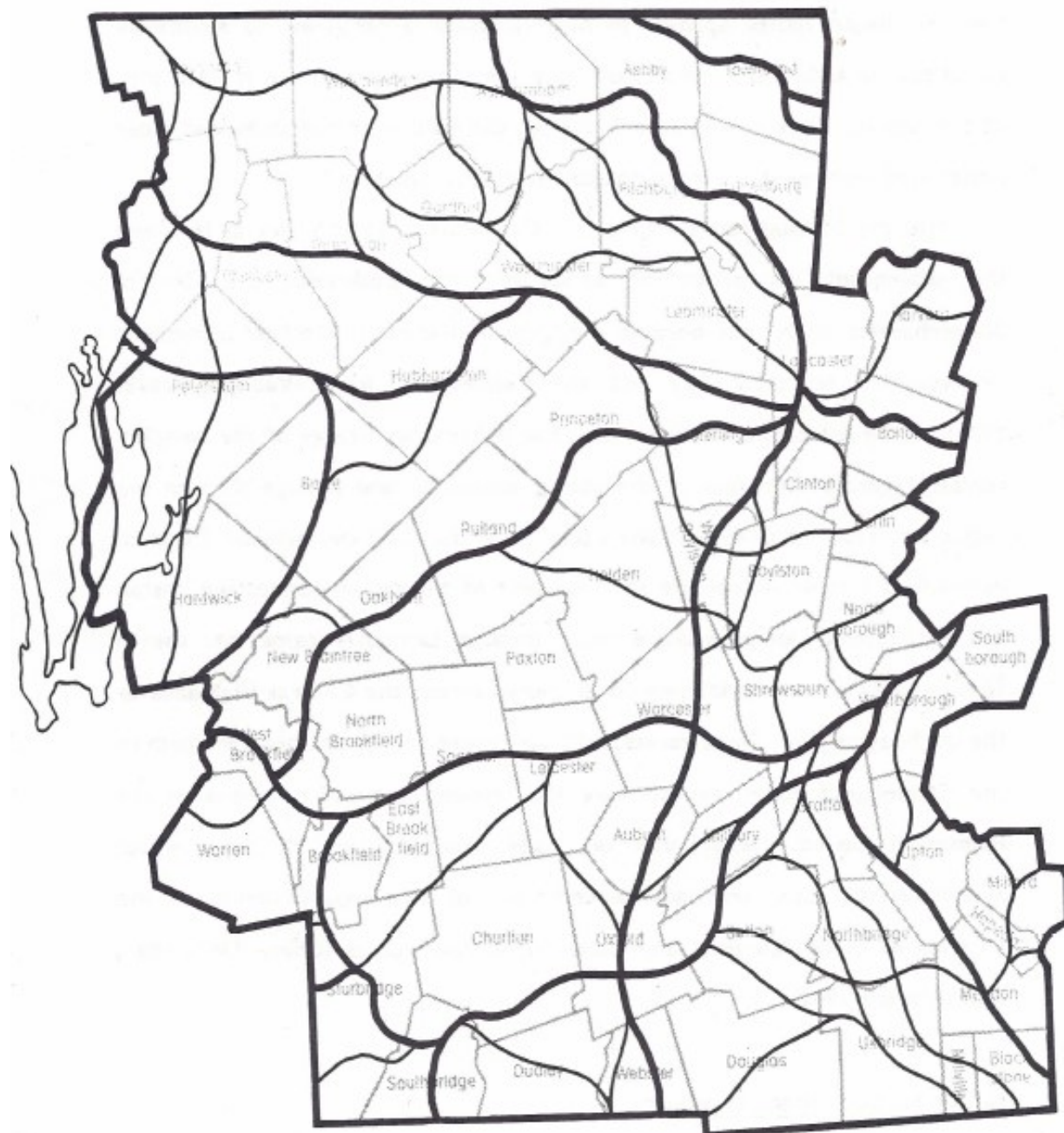


March 13, 2012



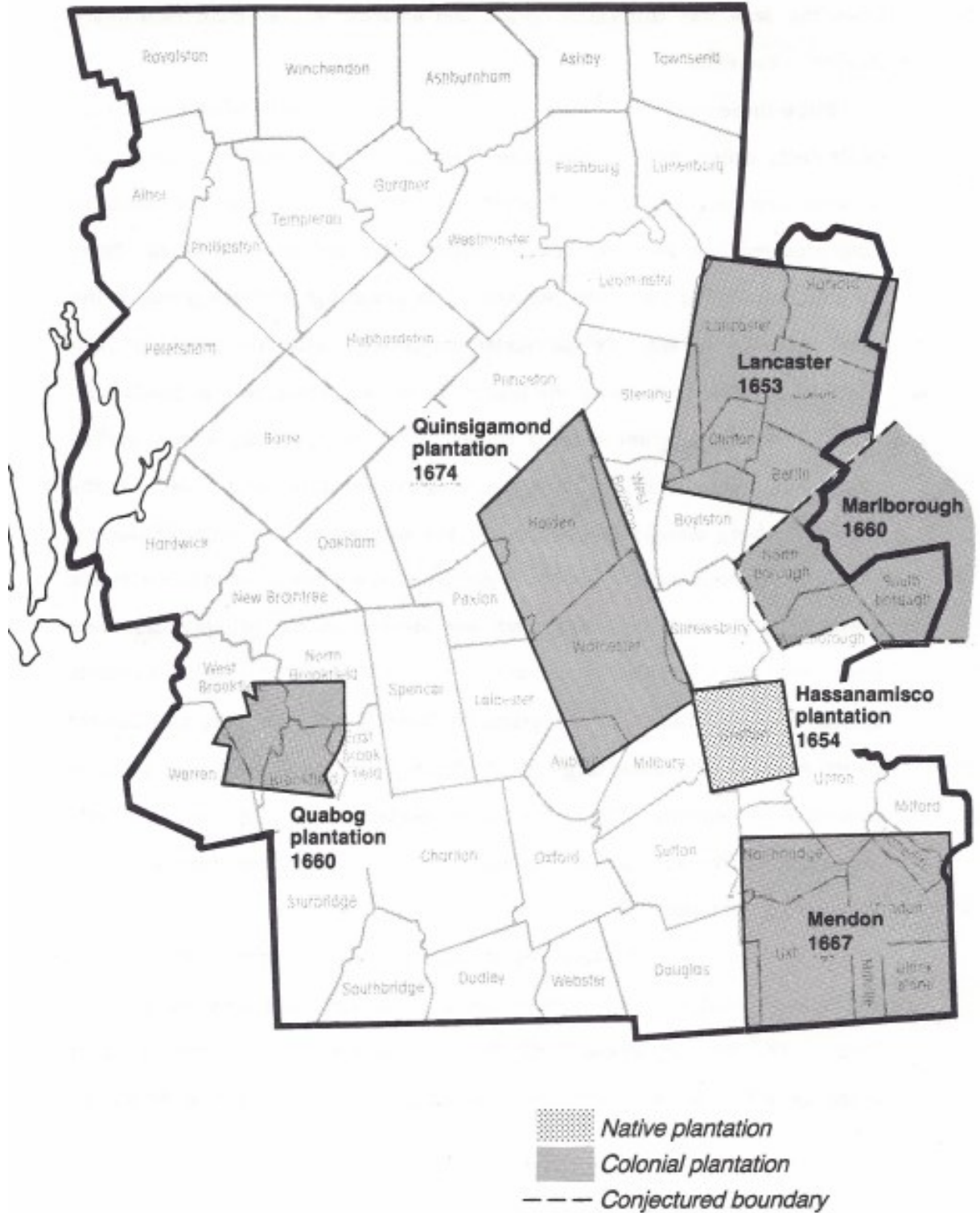
Note: All basins except the Miscoe Brook basin are within the SuAsCo (Sudbury-Assabet-Concord) Watershed. The Miscoe Brook basin is within the Blackstone Watershed.

Contact and Plantation Period Trails

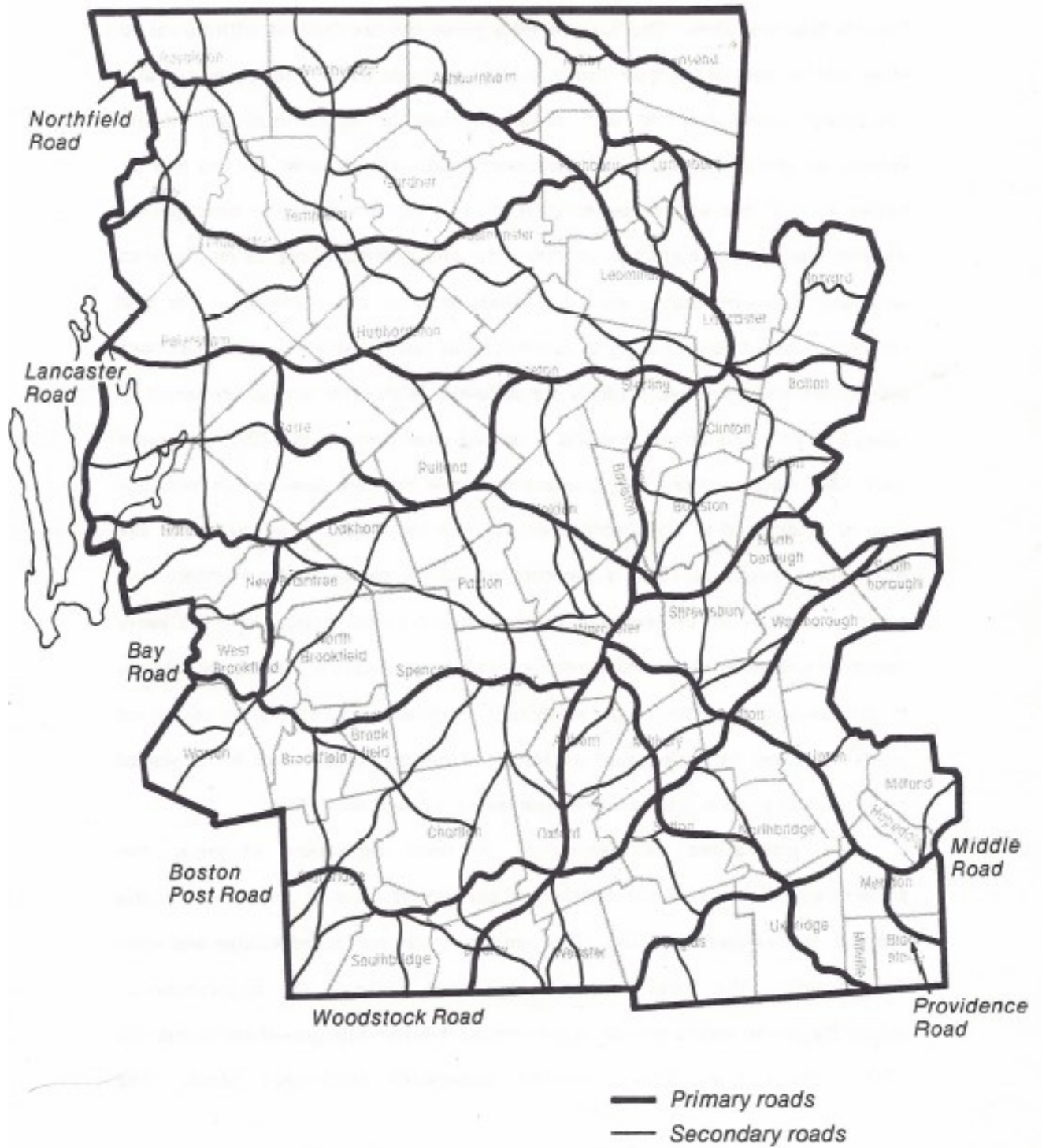


Plantation Period Political Boundaries

(ca. 1675)



Colonial Period Road Network





Town of Westborough Unique Features

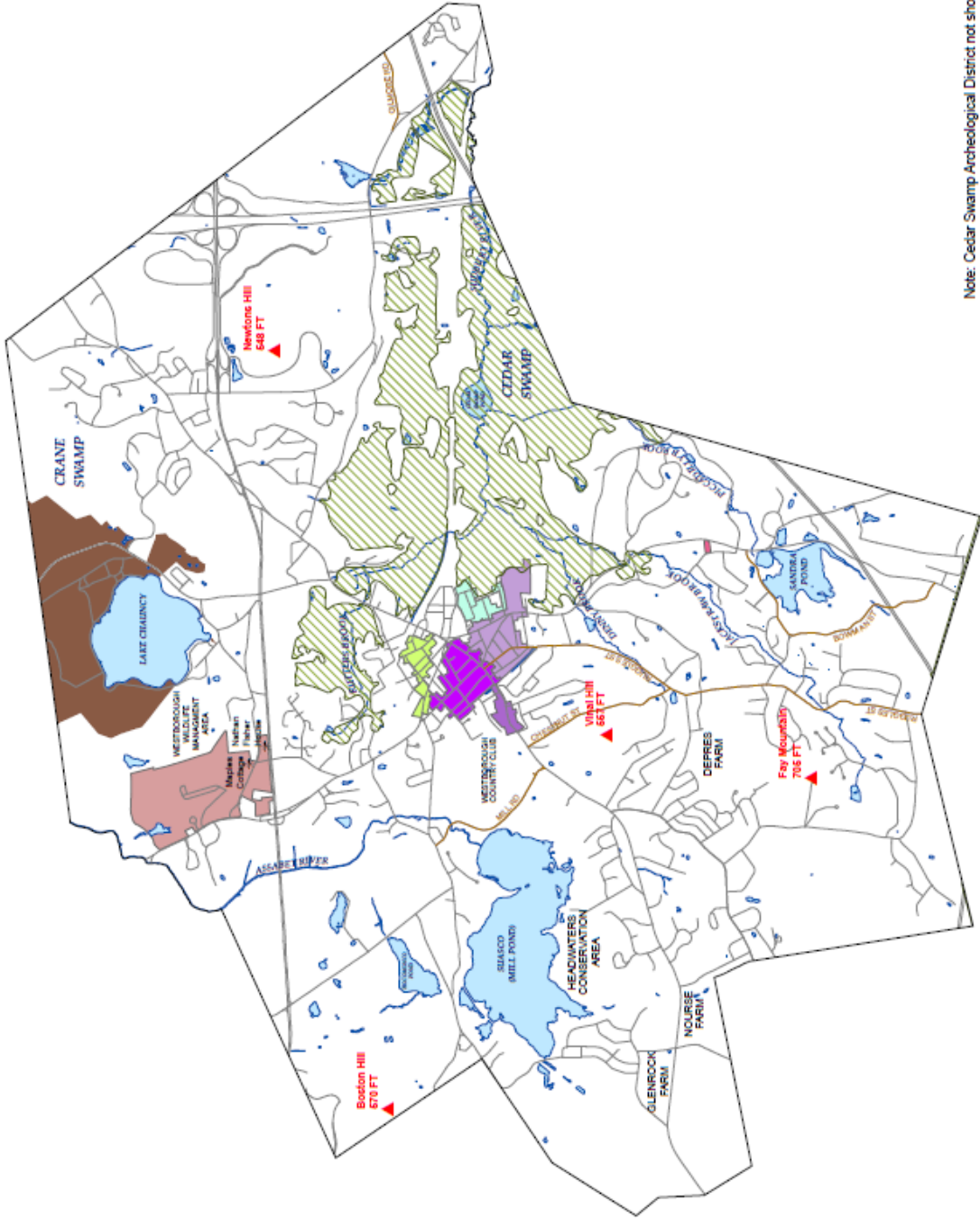
- Scenic Roads
- ▨ Areas of Critical Environmental Concern
- Historic Sites**
- Jonah Warren House
- Lyman School for Boys
- Rankman Parsonage Historic District
- Vintonville Historic District
- West Main St Historic District
- West Main St Historic District (1990)
- West Main St Historic District (2002)
- Westborough State Hospital
- ☼ Historic Buildings

Areas of Critical Environmental Concern Source:
MassGIS, 2009
Department of Conservation and Recreation, 1:25,000

Historic Sites Source:
National Register of Historic Places, 2011



June 5, 2012



Note: Cedar Swamp Archeological District not shown

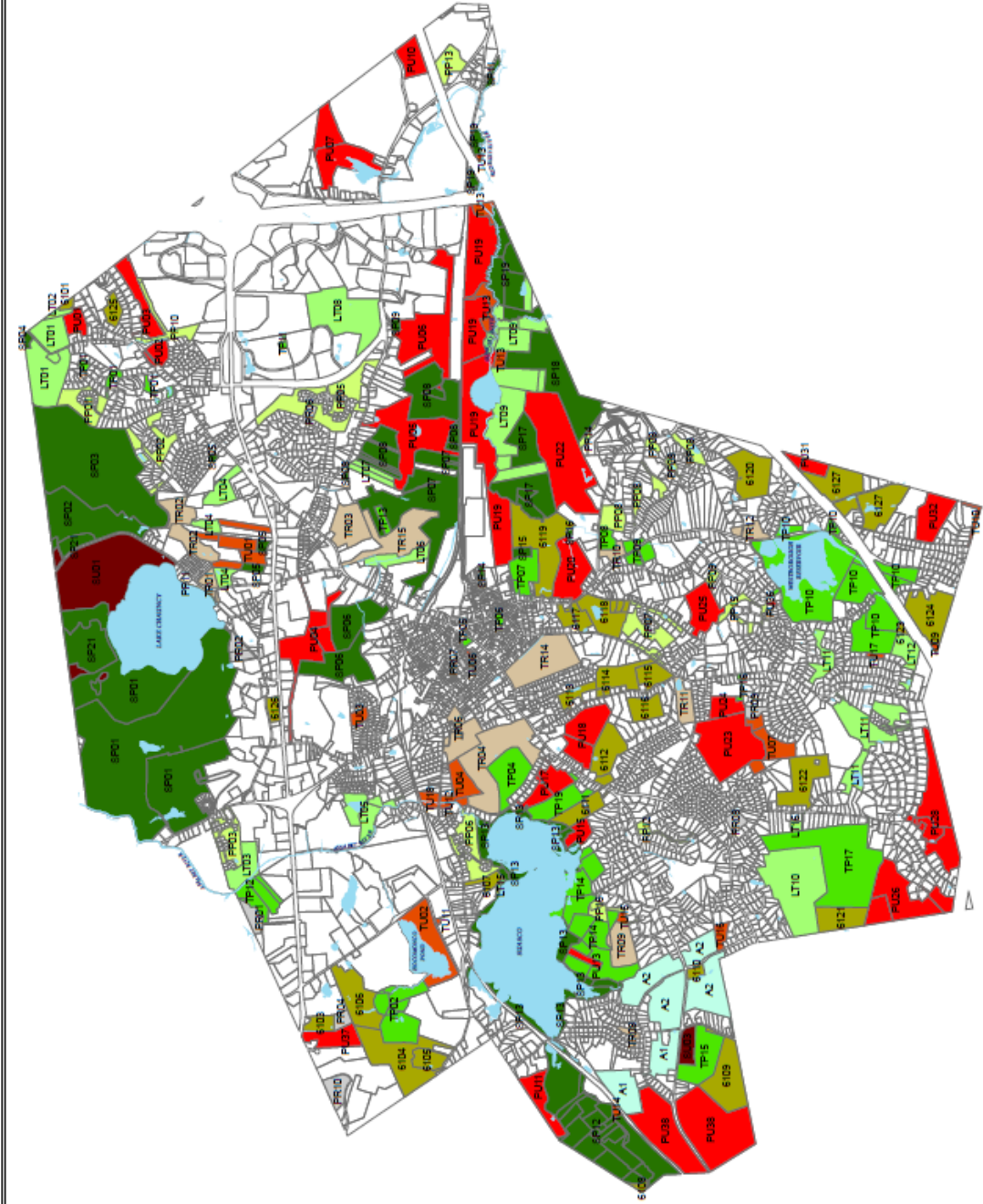


Town of Westborough Open Space Inventory

- State Protected
- Town Protected
- Land Trust Protected
- Private Protected
- APR Protected
- Chapter 61
- Town Recreation
- Private Recreation
- State Unprotected
- Town Unprotected
- Private Unprotected

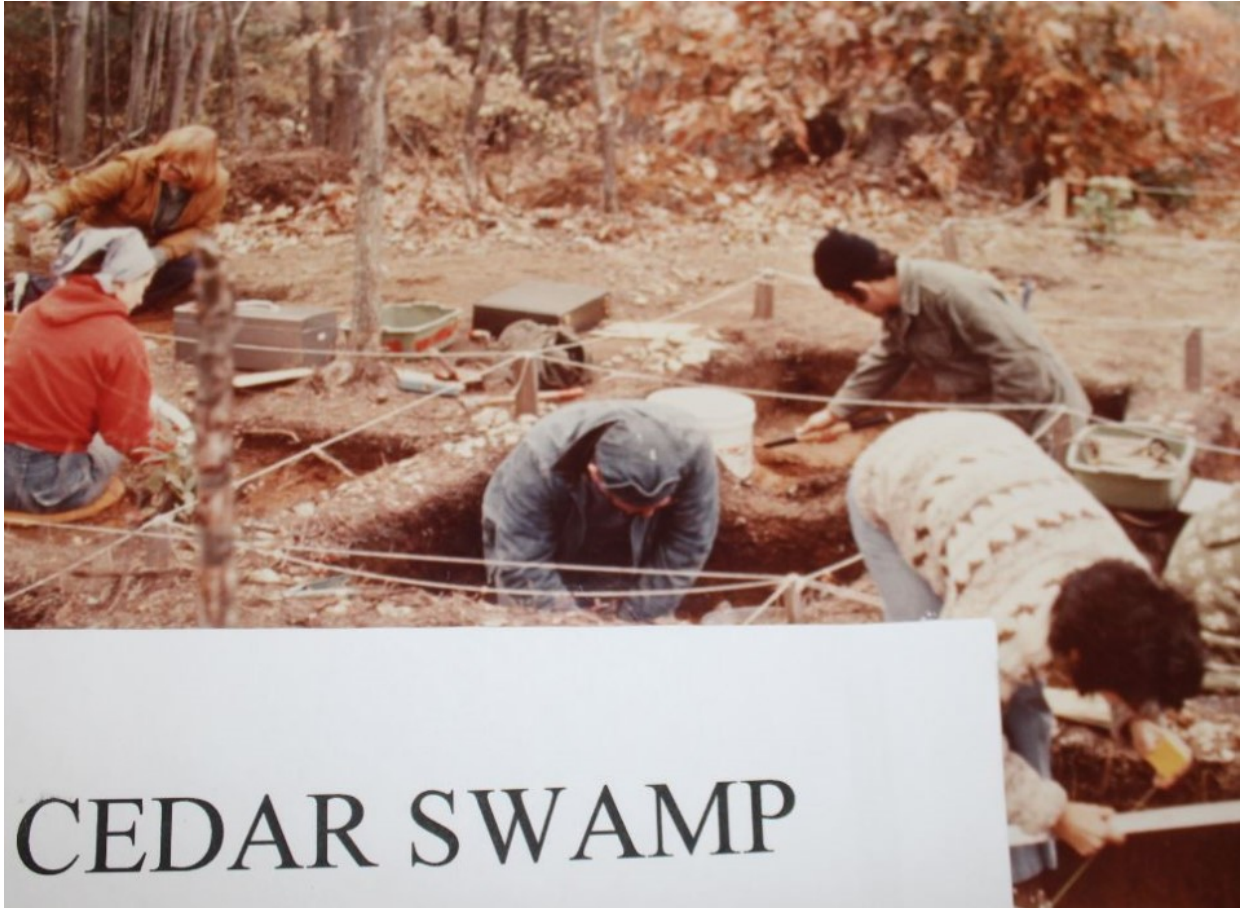


March 5, 2012





Bay State Abrasives



CEDAR SWAMP

TIMELINE

Paleo-Indian:	12,000 - 10,000 B.P.
Late Paleo-Indian:	10,000 - 9,000 B.P.
Early Archaic:	9,000 - 8,000 B.P.
Middle Archaic:	8,000 - 6,000 B.P.
Late Archaic:	6,000 - 3,700 B.P.
Transitional Archaic:	3,700 - 2,700 B.P.
Early Woodland:	2,700 - 2,000 B.P.
Middle Woodland:	2,000 - 1,000 B.P.
Late Woodland:	1,000 - 400 B.P.
Contact:	400 - 150 B.P.





