

WESTBOROUGH MASSACHUSETTS

Architectural Walking Tours

With Music!

1717  2017

Walk #8: Westborough Comes into its Season

Guides:

R. Christopher Noonan, Historic Preservationist / Historic Real Estate Specialist

Luanne Crosby, Troubadour/Songwriter/Singer

Guest Speaker:

Rick Kaplan, K Milk Street LLC, Owner/Manager

August 2017



For further or follow-up information regarding this tour, contact
rcn@preserve-inc.com / 508-473-4884 and luanne@luannecrosby.com

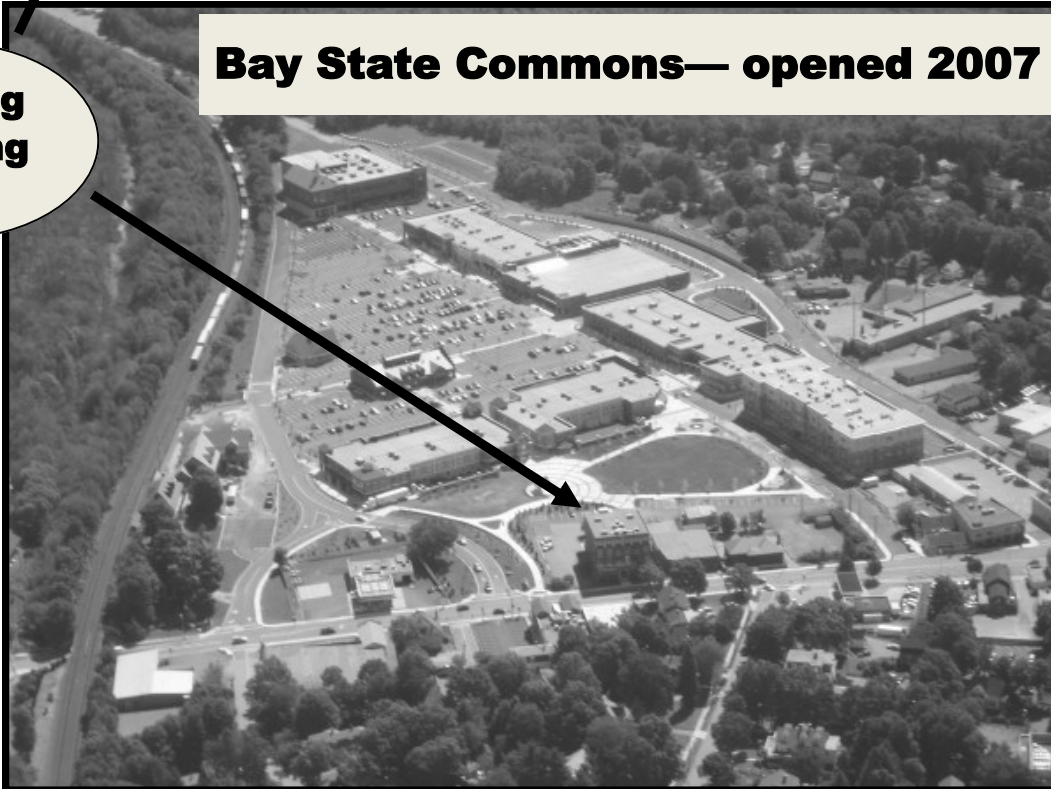


Bay State Abrasives Company—Founded 1922



Bay State Commons— opened 2007

**Keating
Building**





National Straw Works, built 1871
Looking down East Main

Union Street



Burned 1917

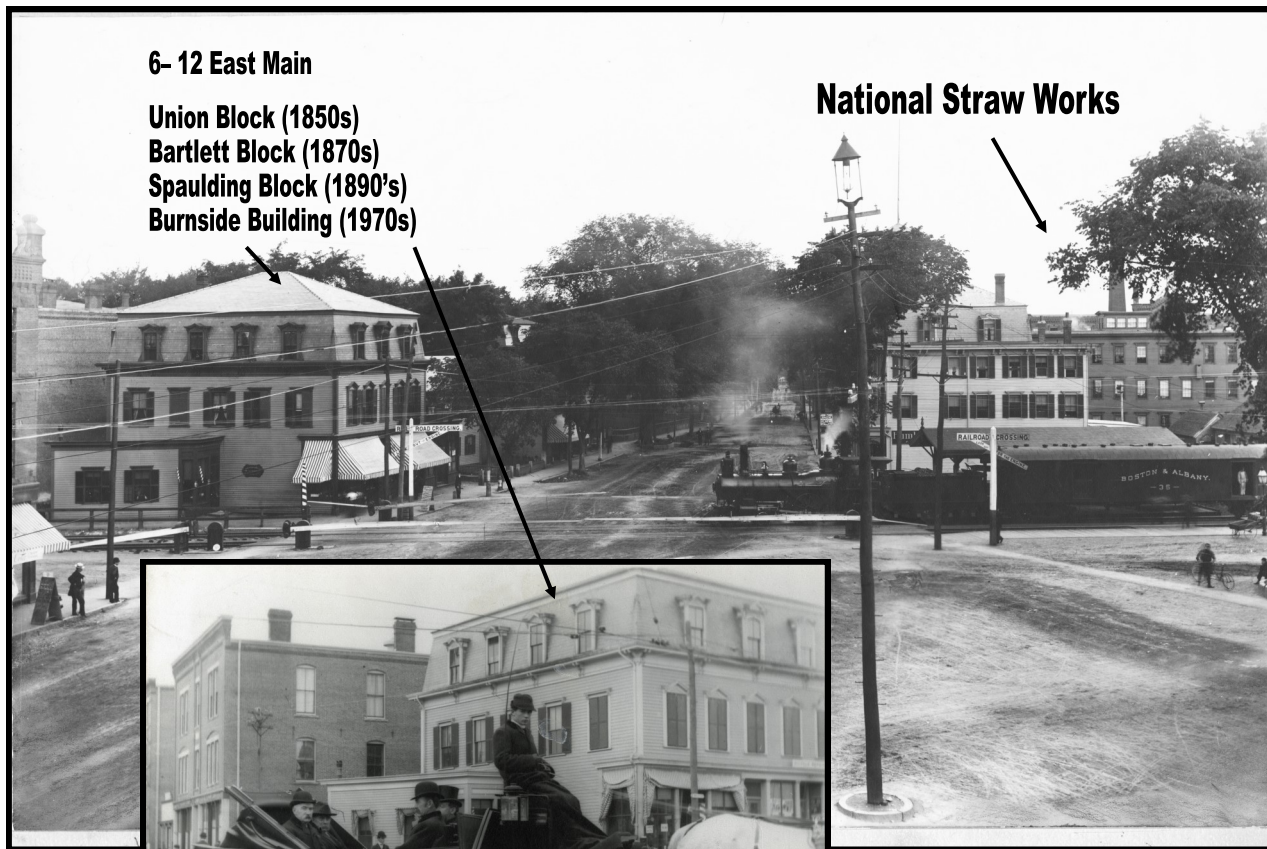


**1 E. Main (old Post Office)
circa 1928**

War Memorial 1931

That year, town meeting approves change of Town Square to Town Rotary)





6- 12 East Main

Union Block (1850s)
Bartlett Block (1870s)
Spaulding Block (1890's)
Burnside Building (1970s)

National Straw Works



**Boston/Worcester RR line
originates 1834**



Circa 1950's

*1870 Beers map indicates that in the lower level,
C. Robbins, dealer in coffins, caskets, furniture re-
pair, mattress cleaning, and made to order uphol-
stery. Also dealer in new and 2nd hand furniture.*

First floor, A.M.L. Wheeler proprietor of Saloon

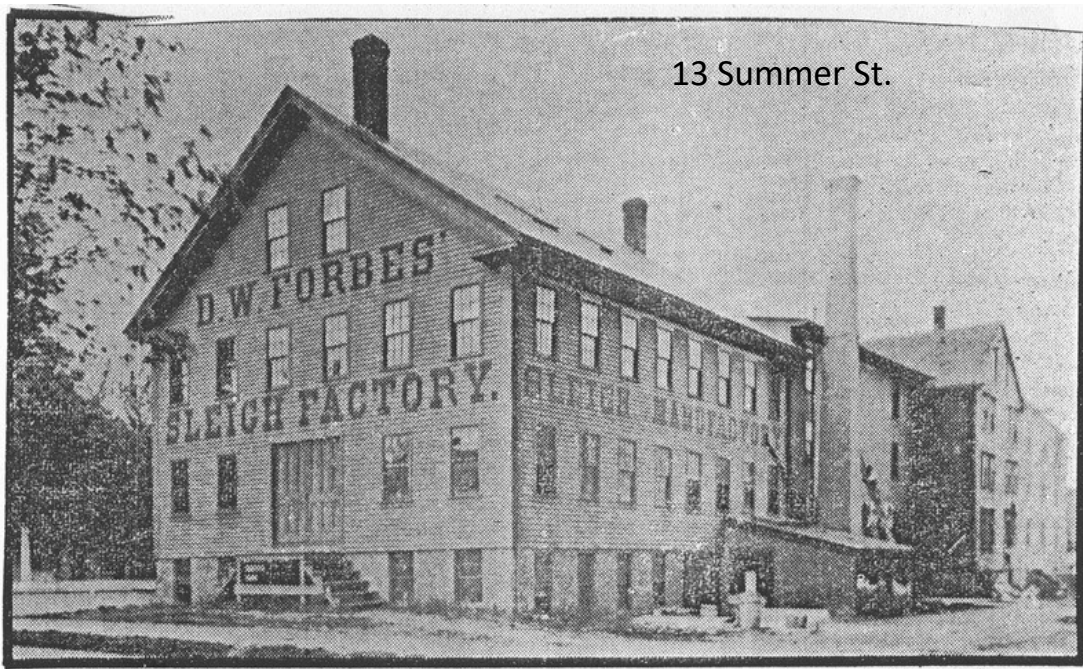


Circa 1970's

HOWE J. W., Farmer
 HOWE D. A., Farmer
 LONG L. E., Engineer at "Kimball's Boot Factory"
 LOCKEY CHAS. T., Mechanic
 LONG W. R., Boot Finisher, Cross st
 LONG CHAS. E., Boot Finisher
 MORSE W. P., Ros California st
 MESSINGER Wm., Gardener, cor Main and California sts
 McTAGGART J., Farmer
 NEWTON W., Farmer
 O'DRISCOLL J., Farmer
 PARKER G. W., Butcher and Boarding House Keeper, South st
 POWERS W. H., Mechanic, cor Church and Green sts
 PERRIN P. H., Nurseryman and Florist
 RAYMOND GEO. H., Farmer, Main st
 ROWELL W., Milk Dealer
 ROBINSON J., Farmer
 SMITH J., Mechanic, Parkman st
 SIBLEY P., Mechanic
 STREETER O. L., Farmer
 STODDARD E., Farmer
 STAPLES J., Farmer
 TIDD S. B., Carrier at "Kimball's Boot Factory"
 TENNY E., Res South st
 WHEELER A. M. L., Proprietor of Saloon, "Morro Block"
 WOOD LINCOLN., Shoe Clerk
 WHITNEY E. H., Hostler at "Ballard & Davis' Stable"
 WARREN C., Farmer
 WARREN A., Farmer
 WINSLOW C. P., Farmer
 WELD H. W., Farmer
 WHITMAN E. W., Farmer and Butcher
 WADSWORTH C., Farmer and Dealer in Wood and Lumber
 WADSWORTH E., Teamster, Harrison ave
 WHITE E. D., Jr., Farmer
 YOUNG J. M., Farmer

Map: 1878 George H. Walker

This historical map of Lowell, Massachusetts, in 1878, provides a detailed view of the city's urban layout. The map is oriented with North at the top, as indicated by the compass rose in the bottom right corner. The central feature is Main Street, which runs diagonally from the top right towards the bottom left. To the left of Main Street, several other streets are shown, including East Street, Winter Street, and Boardman Street. The map is densely packed with buildings, many of which are labeled with the names of their owners or occupants, such as R.W. Harris, T. Lennan, J. Mathews, and J. Warren. A large area in the center is labeled 'High Street School'. The map also shows various industrial and commercial buildings, including a 'Steam Planning Mill' and a 'National Steam Works'. The map is a valuable historical document that provides insight into the city's development and urban planning in the late 19th century.

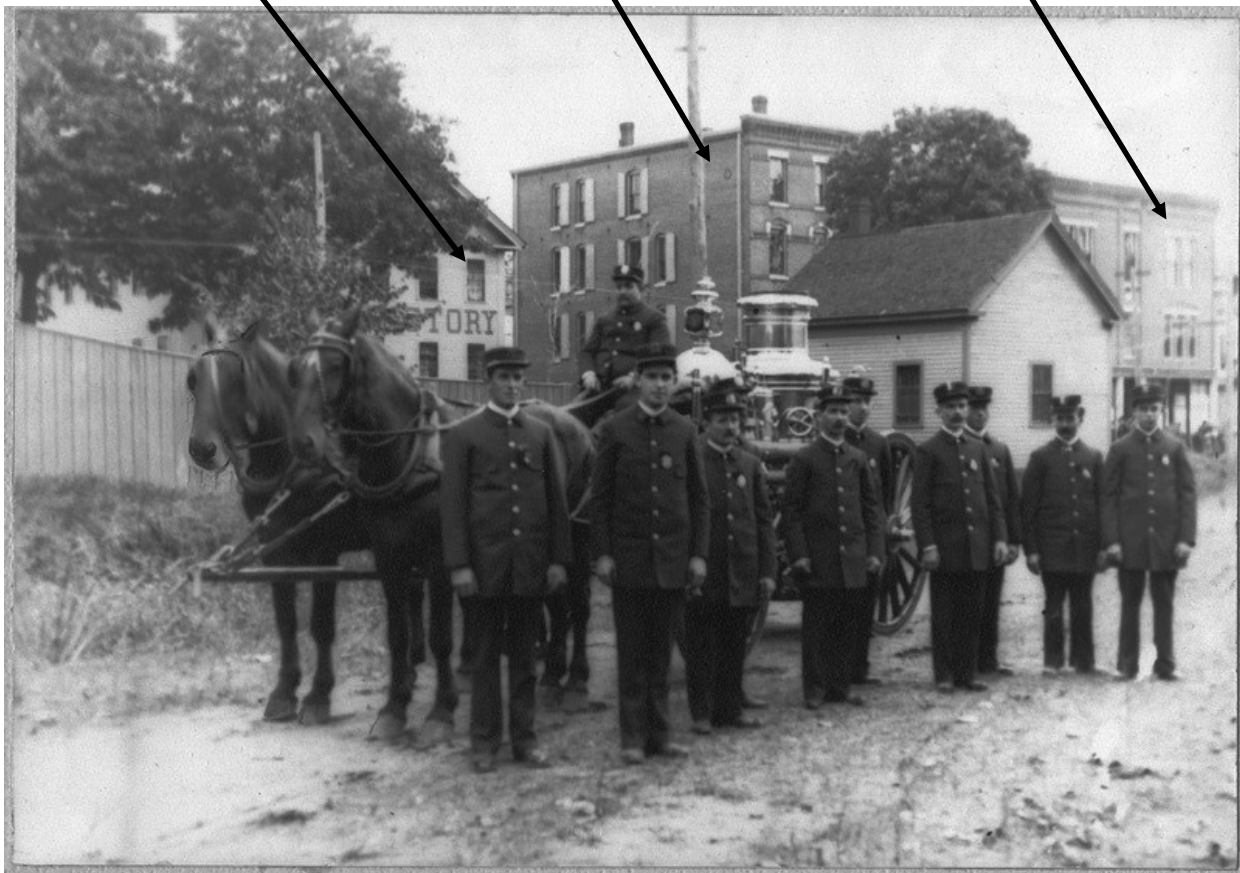


The D.W. Forbes Sleigh Factory in 1886. The factory was built in 1858 and was the oldest and best known sleigh manufacturer in Westboro. In 1928 became Strand Movie Theater

13 Summer St.

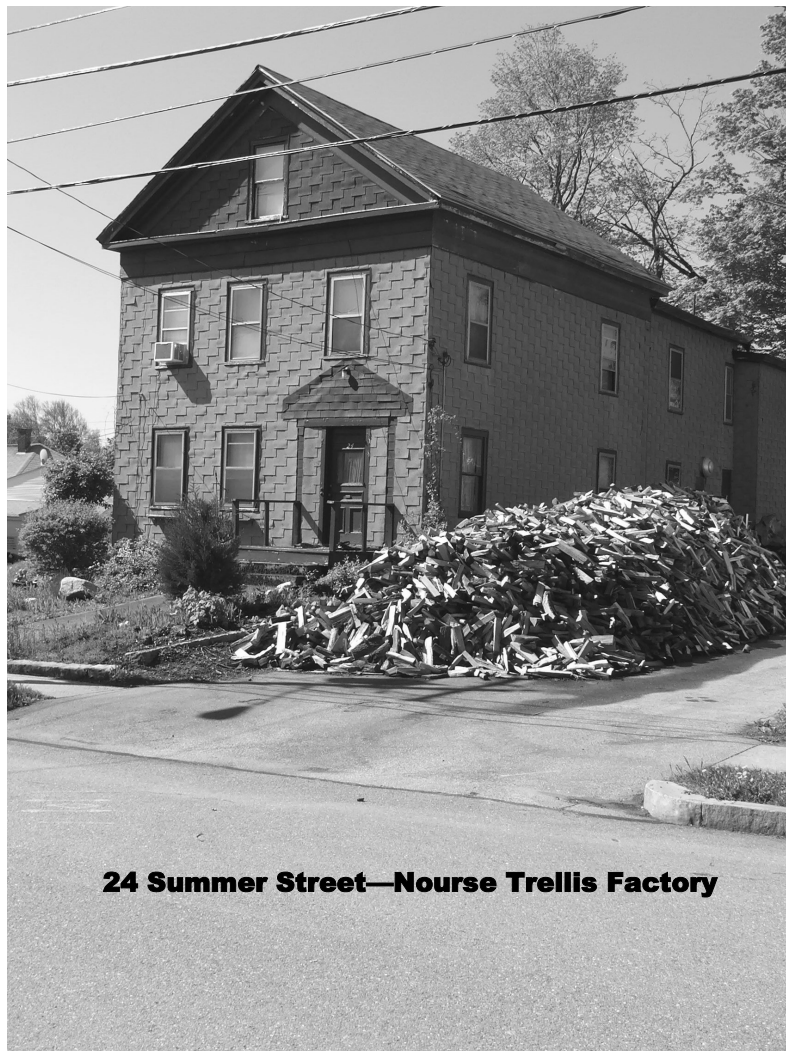
11 Summer St.

3-5 Summer St.



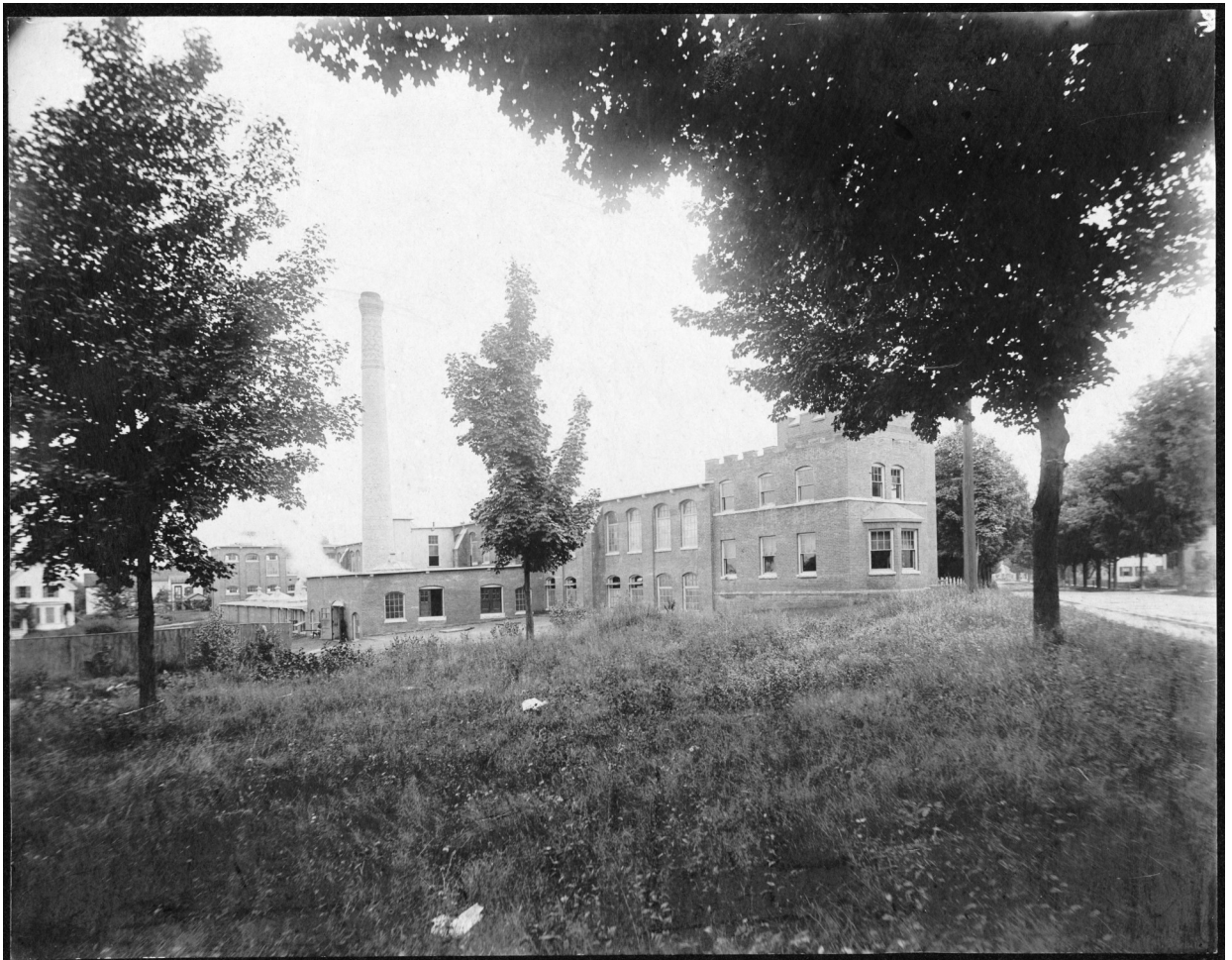


22 Summer? C.S Whiting Boot Shop



24 Summer Street—Nourse Trellis Factory

Westborough Weaving Co. 1902—Renaissance Revival Style
69 Milk Street



Home Advertisement from the 1920's

Some Basic Build Your Own Home Kits You Could Order

Our new Twenties homes page featuring new homes and existing houses that were for sale during the decade, the page is designed to provide examples of some of the fixtures and furnishings you may have found in a 20s home together with examples of self build kits. Sizes varied, and ranged in prices from a few thousand dollars to about ten thousand dollars for a four to six room home. Some were designed for one family but quite often they were designed for more than one family to live next to one another. Many built from Self Home Build Kits, sold through home shopping catalogs or via newspaper and Magazine Adverts.

Florence Self Build House

Price: \$1,198

Description Florence Cozy 5 Room Cottage comes with everything needed to complete your property including Full Plans, Lumber, Roofing Shingles, Doors, Windows, Hard Wood Flooring, Moldings plus the varnish and paint to complete your house.

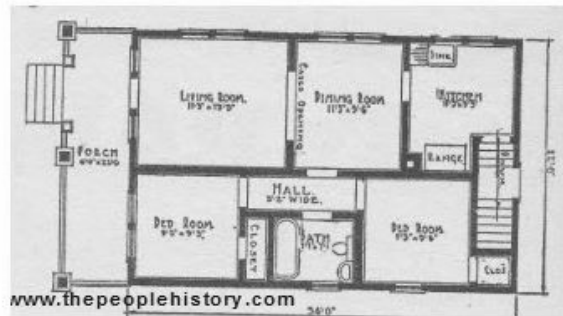


Florence Floor Room Layout

Price:

Description The Florence is a Cozy 5 room cottage featuring 2 bedrooms (9ft 6" X 5ft 6") , Bathroom, Living Room (11ft 3" X 13ft 3"), Dining Room (11ft 3" X 9ft 3") with A Kitchen (11ft 3" X 9ft 3") and a front porch

The Florence Layout -- 54ft x 22ft



Self Build 7 Room Aladdin Dutch Colonial Barn Style property

Price: \$1,298

Description Dutch Colonial with full ceilings first and second floor with a large living room, large dining room, 3 bedrooms, Kitchen, Bathroom, Linen and a clothes closet

7 Room Dutch Colonial Self Build Home

\$1,298



Two Bedroom Country Cottage

Price: Ready Cut \$1,213

Price: Sectional \$2,205

Description

This Country Cottage with 2 Bedrooms, Living Room, Kitchen and Bathroom comes in two options ready cut or as Sectional which allows 2 people with little experience to assemble the kit in a short time.



"Ready Cut"
\$1213

The Piping Rock
2 Bedroom Country
Cottage

"Sectional"
\$2205

11 High Street—Georgian/Federal Style



Rev. Ebenezer Parkman Parsonage - moved to current location in 1867
from the corner of East Main and High Street





Frank's house opposite street from Frank's
#9 HIGH STREET



#12 HIGH STREET



Side of Frank's house next to Mrs. Cady's-

#12 HIGH STREET



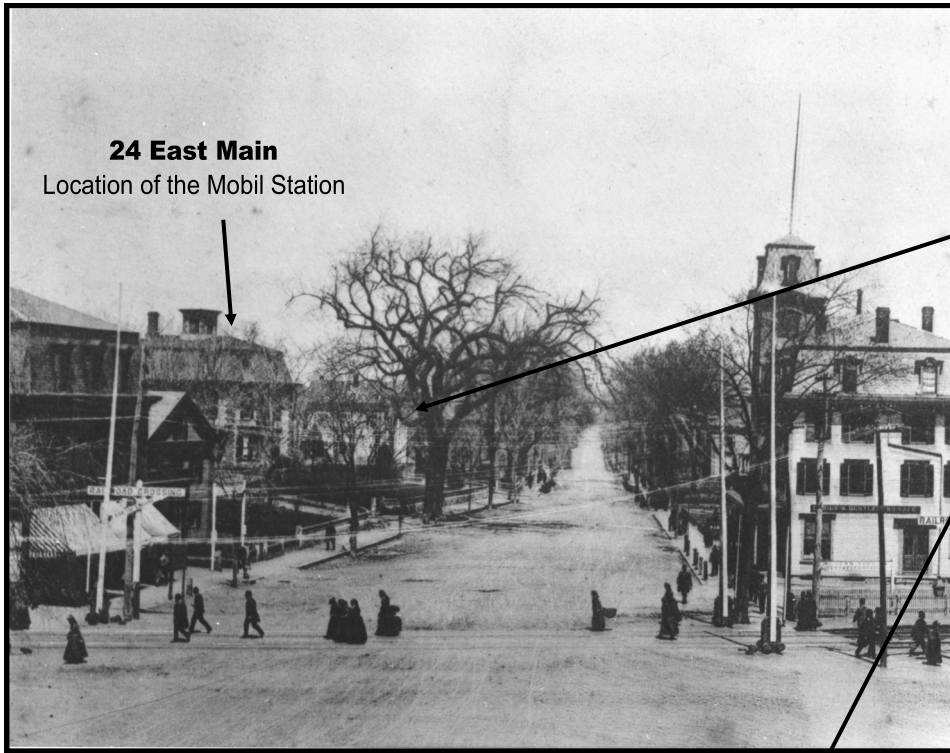
10 High Street

12 High Street

4 High Street

6 High Street





**Gilman W. Morse
House (1855)
30 East Main**

Still exists today

Location of Westborough
House of Pizza

