



## **Walk #9: Immigrant Workers to International Business**

### **Guides:**

**R. Christopher Noonan**, Historic Preservationist / Historic Real Estate Specialist

**Luanne Crosby**, Troubadour/Songwriter/Singer

September 2017

*For further or follow-up information regarding this tour, contact  
[rcn@preserve-inc.com](mailto:rcn@preserve-inc.com) / 508-473-4884 and [luanne@luannecrosby.com](mailto:luanne@luannecrosby.com)*



**Map: 1830 Nahum Fisher**



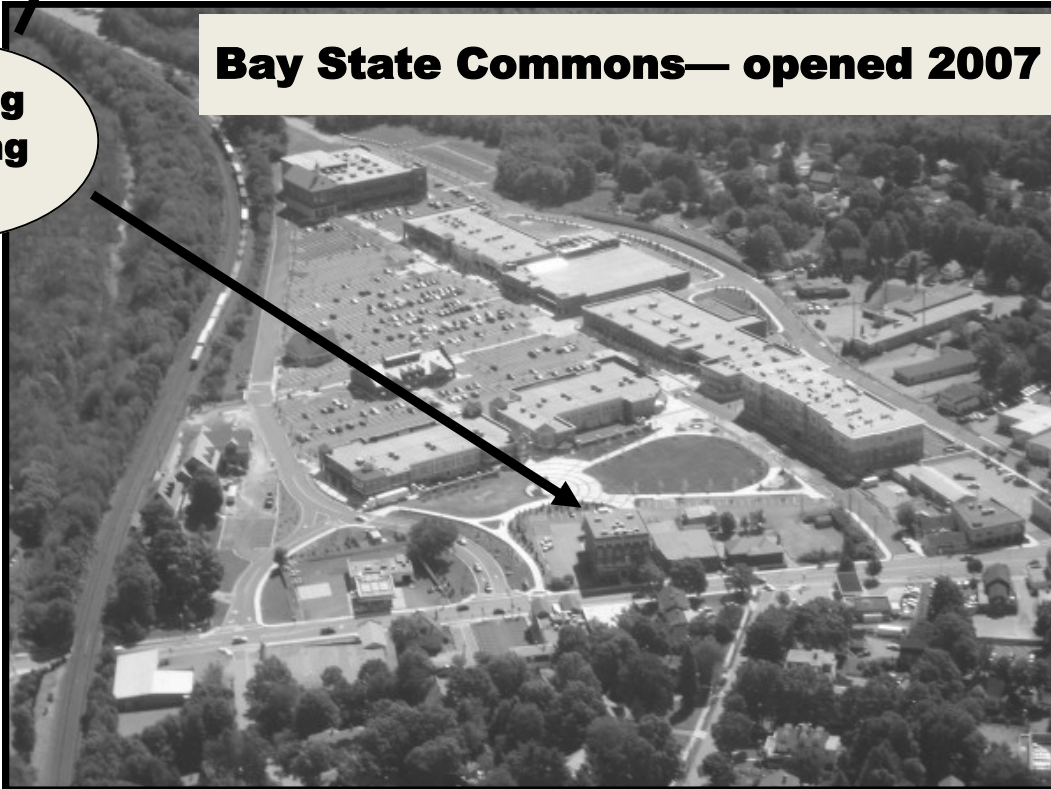
Nahum Fisher's Georgian-Federal house today at 58 South St.

## **Bay State Abrasives Company—Founded 1922**



## **Bay State Commons— opened 2007**

**Keating  
Building**







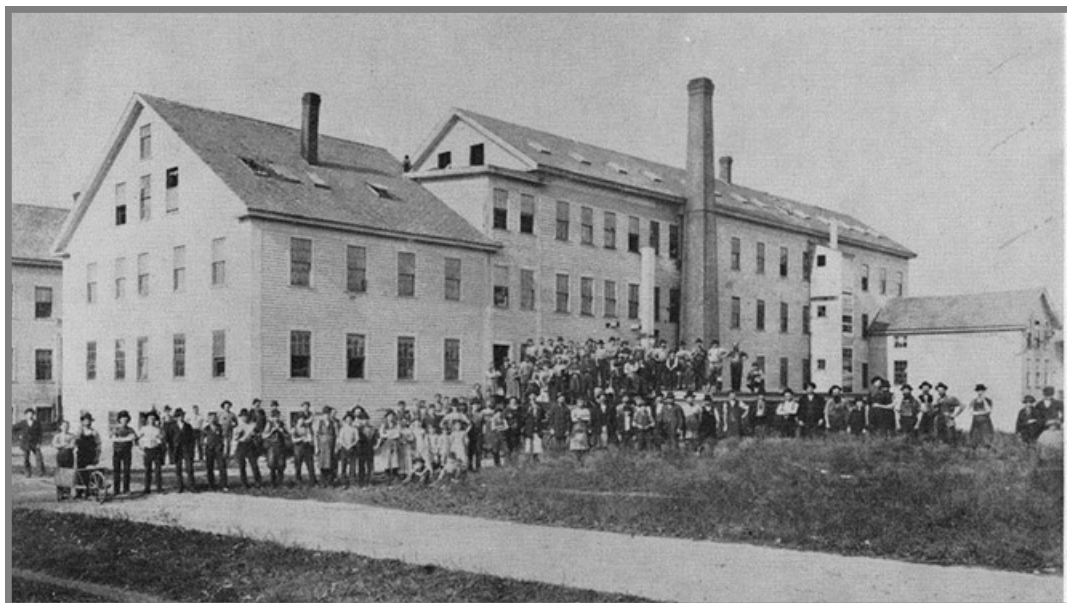
**Map: 1855 GM Hopkins**

Otis F Vinton's House (1855)  
8 Green Street



**Map: 1857  
Henry F. Walling**





George E. Brigham Factory Boot and Shoe factory, 1860—1900  
adjacent to J.B. Kimball and Company Boot and Shoe shop (see 1878 George H Walker Map)



Bartlett Box and Lumber Factory, 1870's (Whitney/Bartlett family)  
Clapboards, shingles, lathe for building construction



Bartlett Box and Lumber  
Factory Workers, 1890's

# GREEK REVIVAL COLORS 1830-1850



For EXTERIORS



C-1



C-2



C-3



C-4



C-5

from *Paints for Old Houses*, Providence Preservation Society  
October 1989

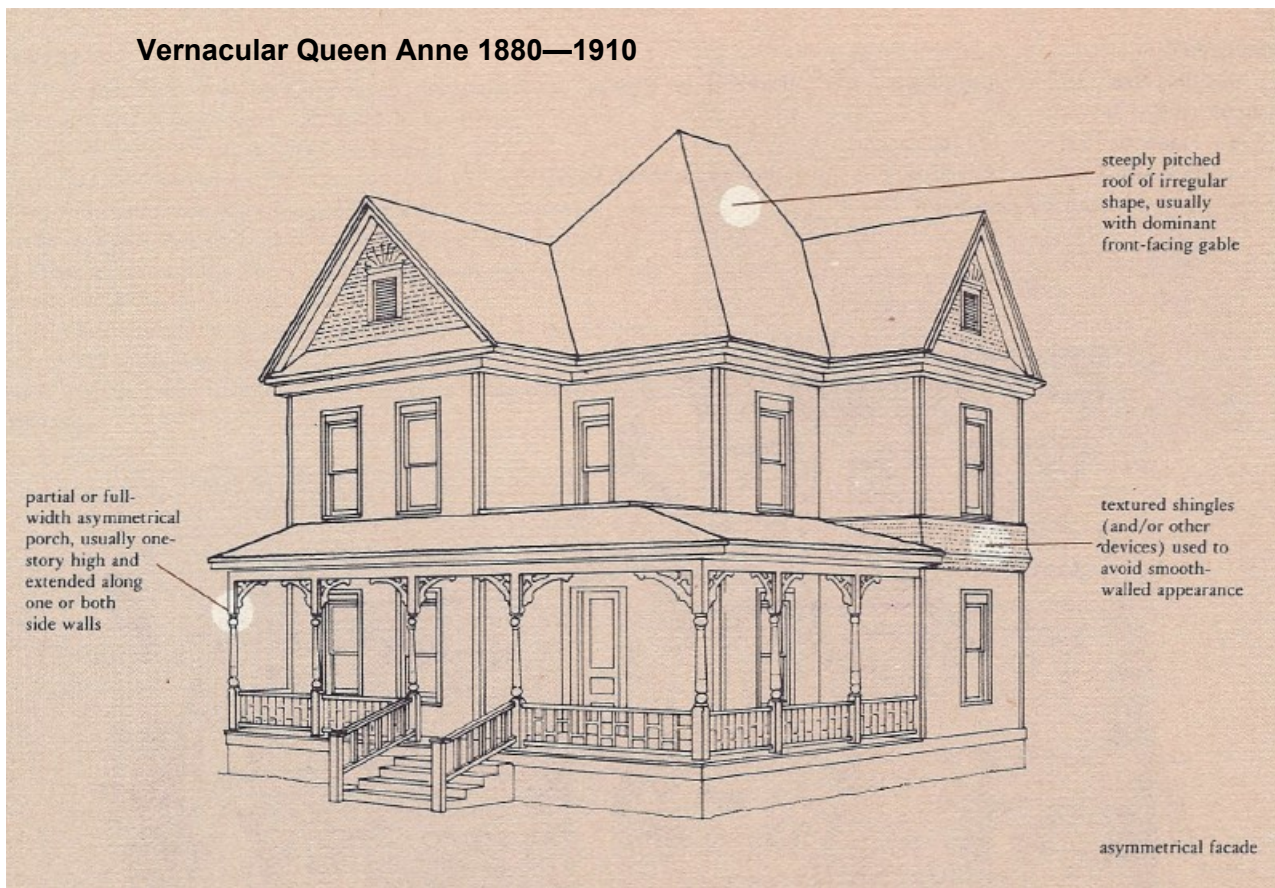


**Vernacular Italianate 1840—1885**



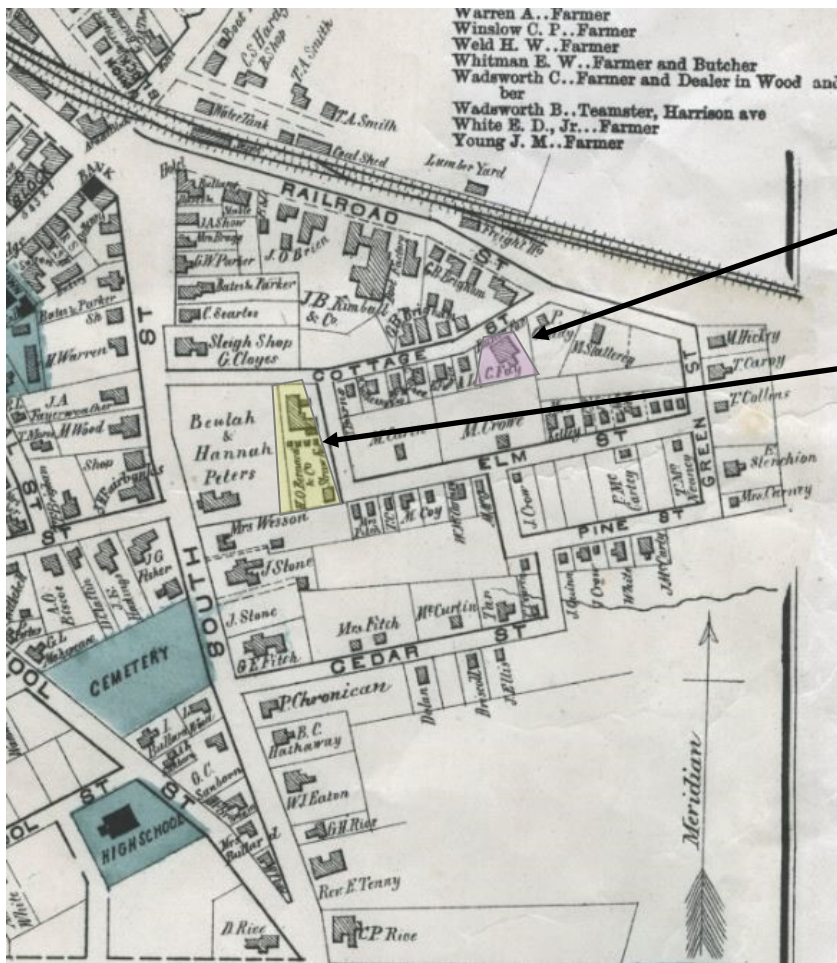
**Accurate historic material choice and colors for Queen Anne**

**Vernacular Queen Anne 1880—1910**



From Field Guide to American Houses, Virginia & Lee McAlester © 1984

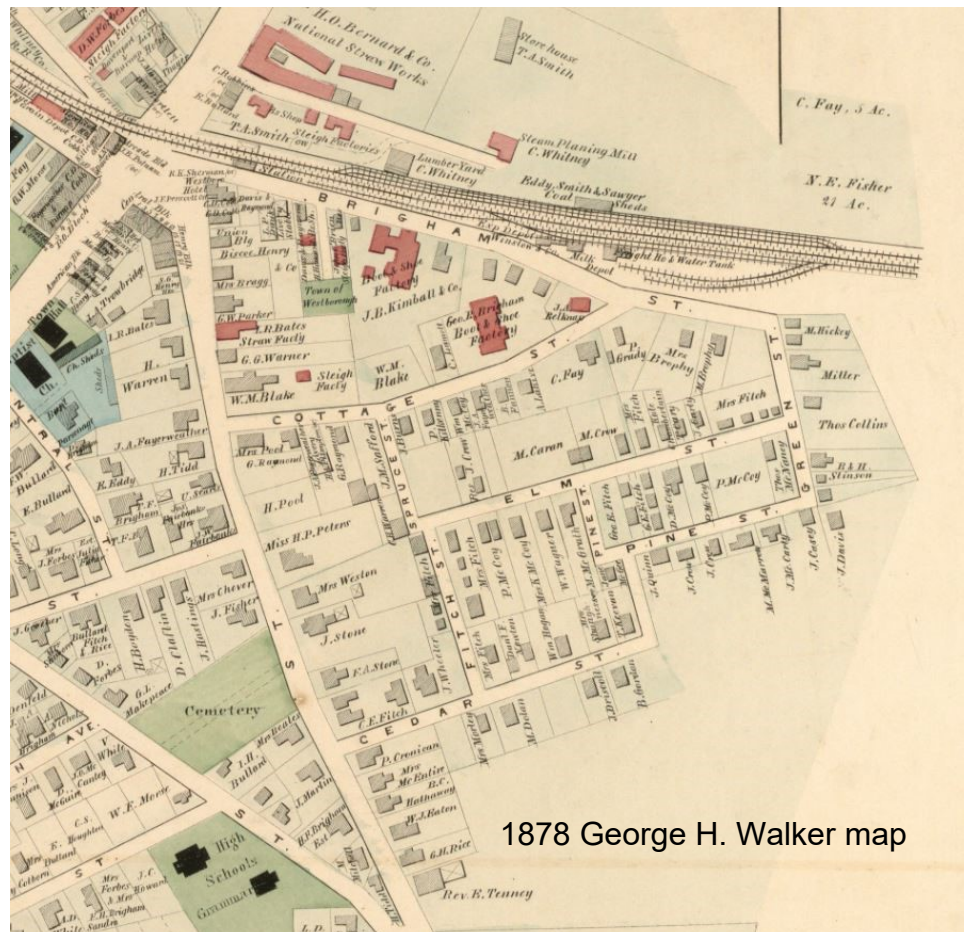




Butter and Cheese Factory  
1860'S

H.O. Bernard Straw Factory  
1870'S

Map: 1870 J.B. Beers

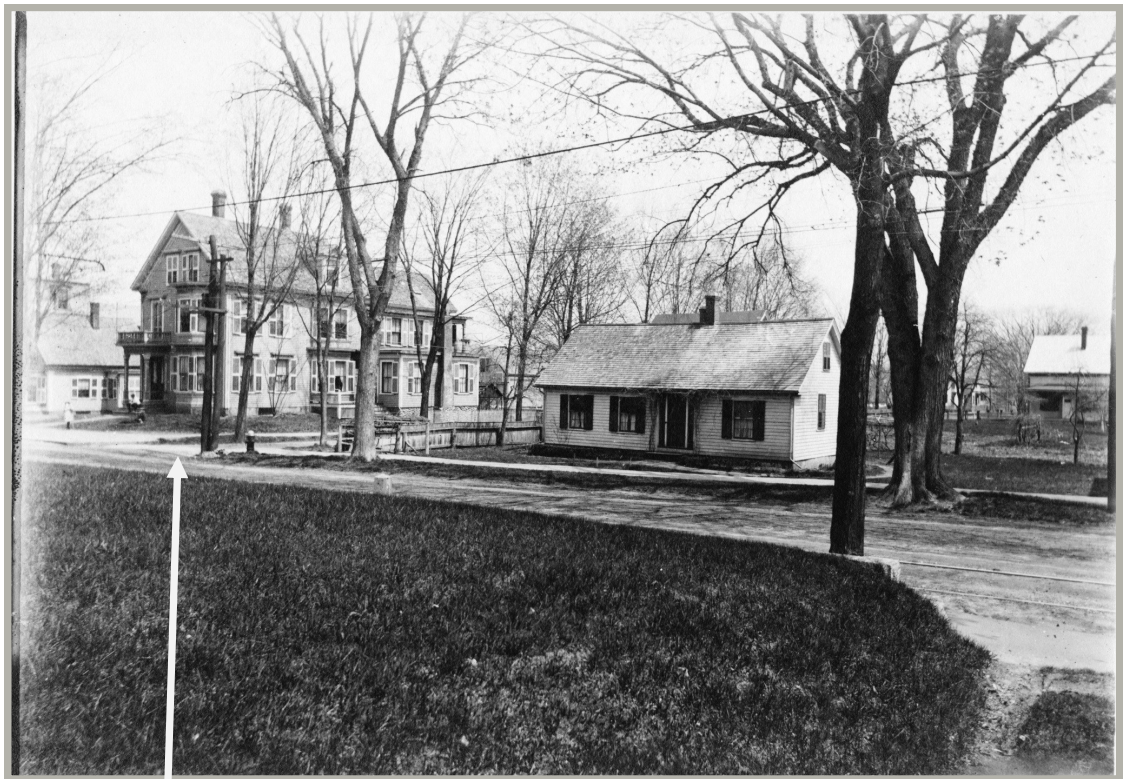


1878 George H. Walker map





Central House, circa 1977



70 South St.





**Map: 1880 E.H. Bigelow**



**Map: 1888 O.H. Bailey**









1889—Frederick White opens the White Cycle Company at 12 Beach St.  
 Bought in 1896 by Humber Racer



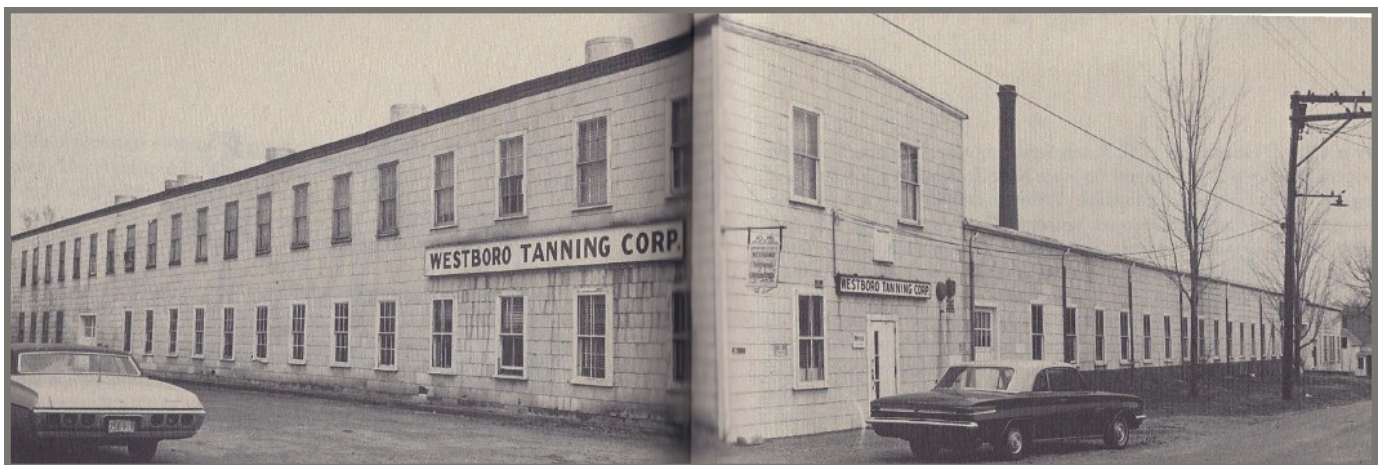
1899 The Stanley Locomobile Company purchases the facility at 12 Beach Street



James Cooper opens tannery at 12 Beach Street 1914-1971



C 1914



C 1970

Source of lower image *On The Beaten Path: Westborough, Massachusetts*, 1984 Kristina Nilson Allen