

# WESTBOROUGH MASSACHUSETTS

## Architectural Walking Tours

*With Music!*

1717  2017

### Walk #6: Westborough on the Move

#### Guides:

R. Christopher Noonan, Historic Preservationist / Historic Real Estate Specialist

Luanne Crosby, Troubadour/Songwriter/Singer

#### Guest Speaker:

John Walden, Director, Department of Public Works

June 2017



For further or follow-up information regarding this tour, contact  
[rcn@preserve-inc.com](mailto:rcn@preserve-inc.com) / 508-473-4884 and [luanne@luannecrosby.com](mailto:luanne@luannecrosby.com)





**Map: 1830 Nahum Fisher**



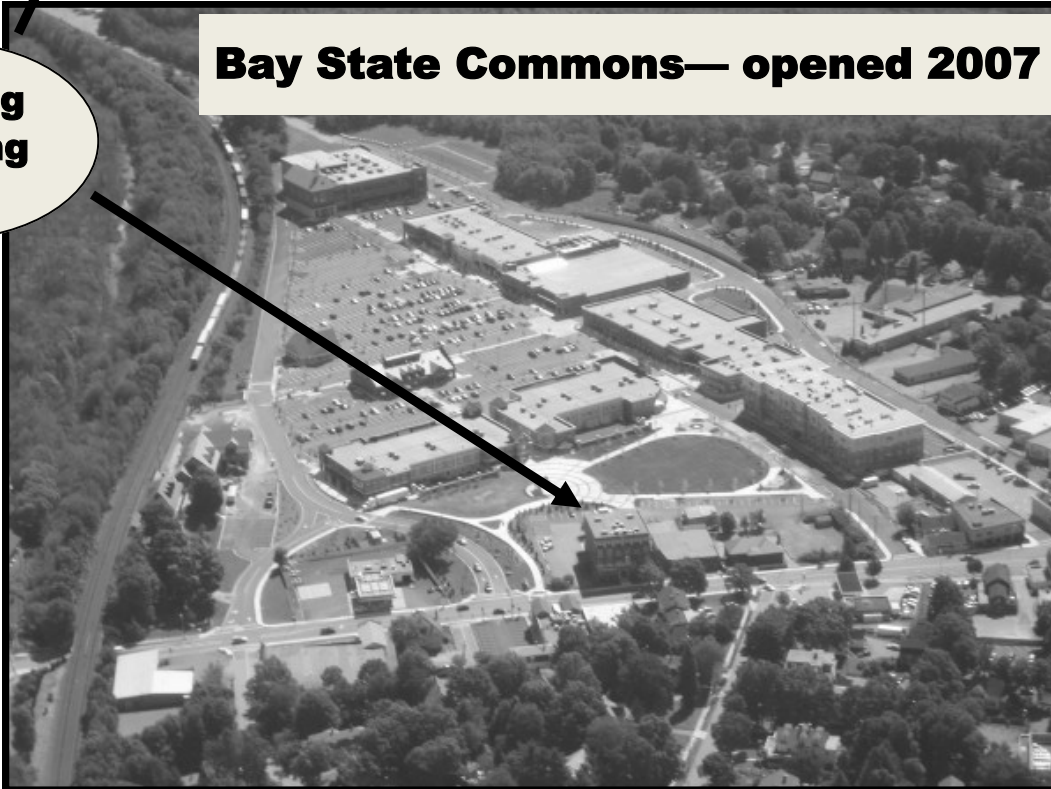
**Map: 1857 Henry F. Walling**

## **Bay State Abrasives Company—Founded 1922**



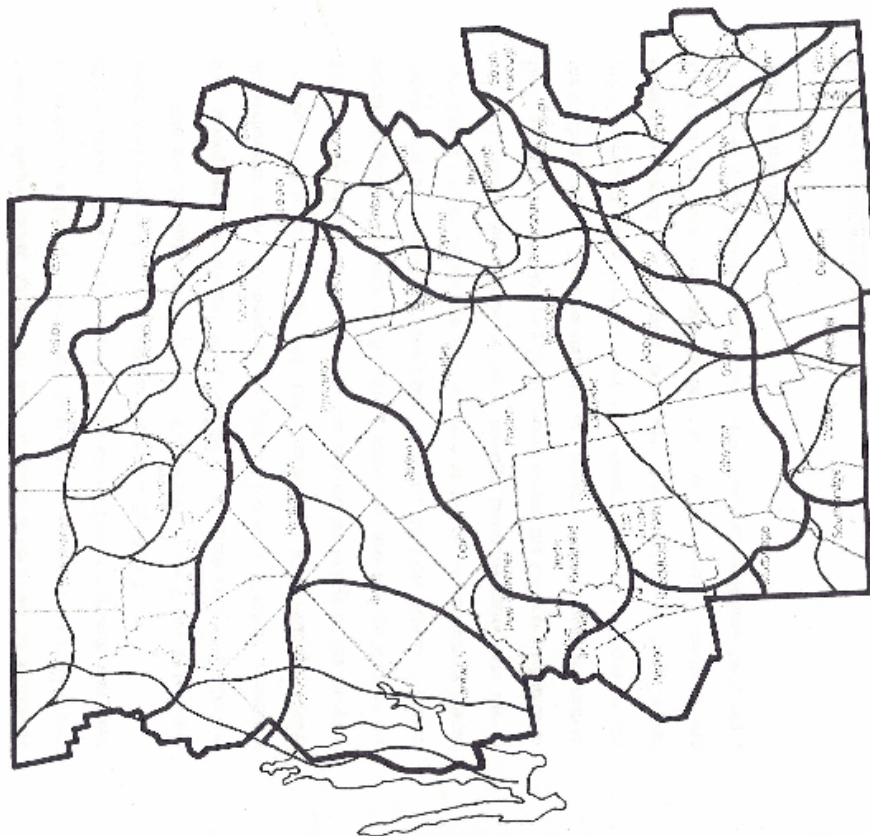
## **Bay State Commons— opened 2007**

**Keating  
Building**



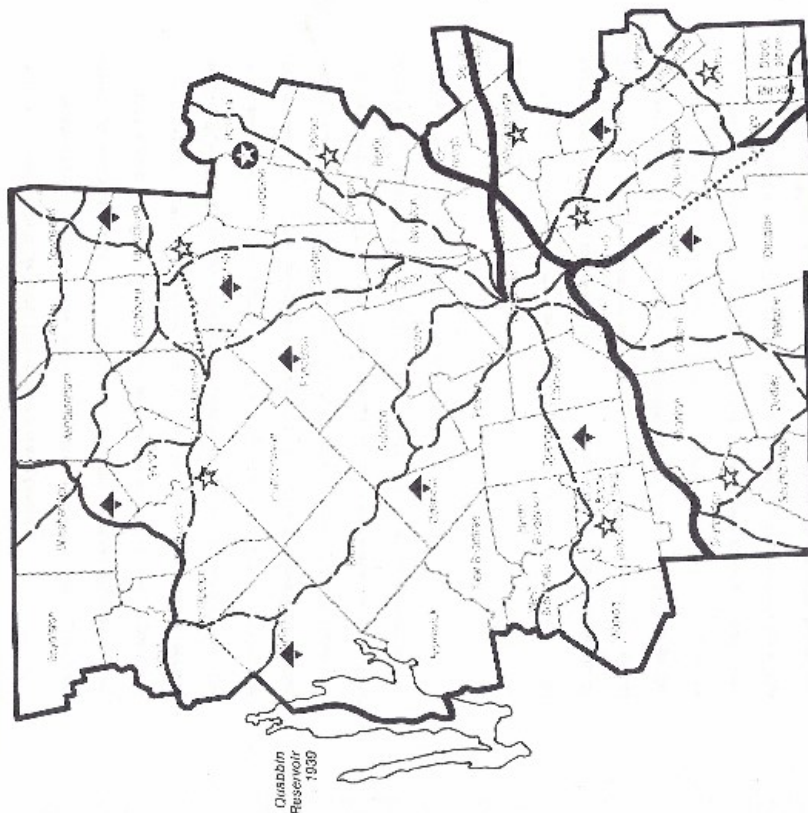


### Contact and Plantation Period Trails



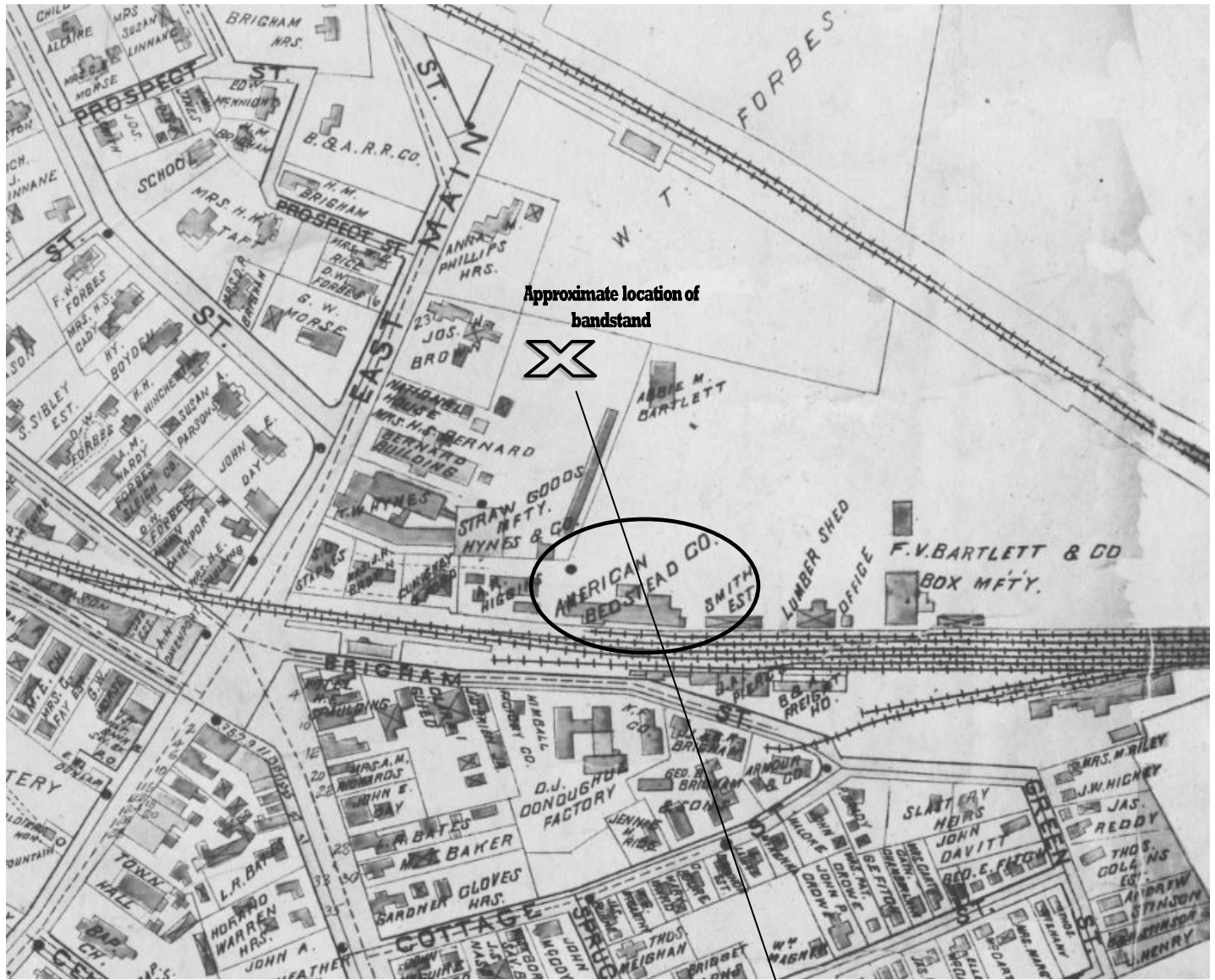
— Primary trails  
— Secondary trails

### Early Modern Period Highways, Airfields and Recreation Areas



— Federal highway  
- - - State highway  
— Express highway  
..... projected route  
☆ Airfield  
▲ State forest or reservation  
⊙ Military base





1898 L. J. Richards map

# **Foster Richardson (American) Bedstead Co. 1890's**



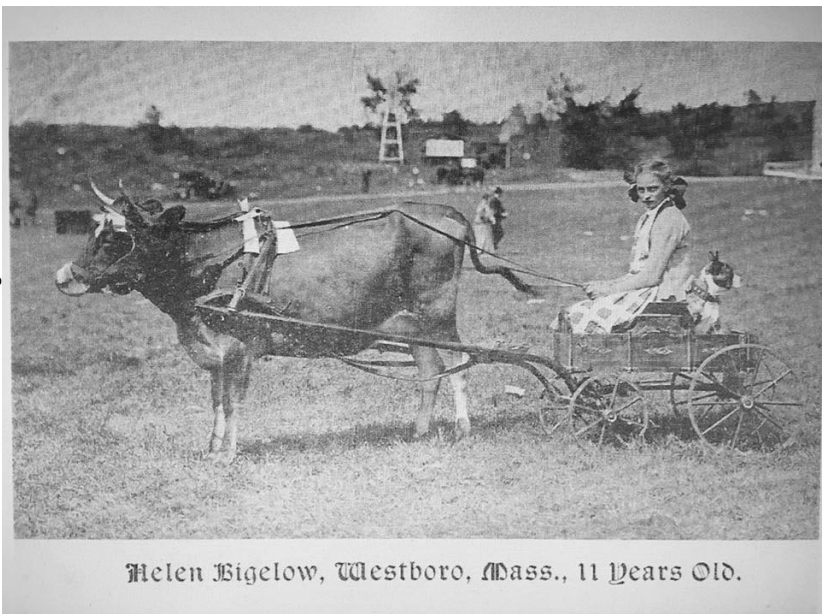
## Personal Transportation – Horse and Rider



1878 George H. Walker map

**Stables—you always  
need a place to park!**

**There's always someone . . .**



Helen Bigelow, Westboro, Mass., 11 Years Old.

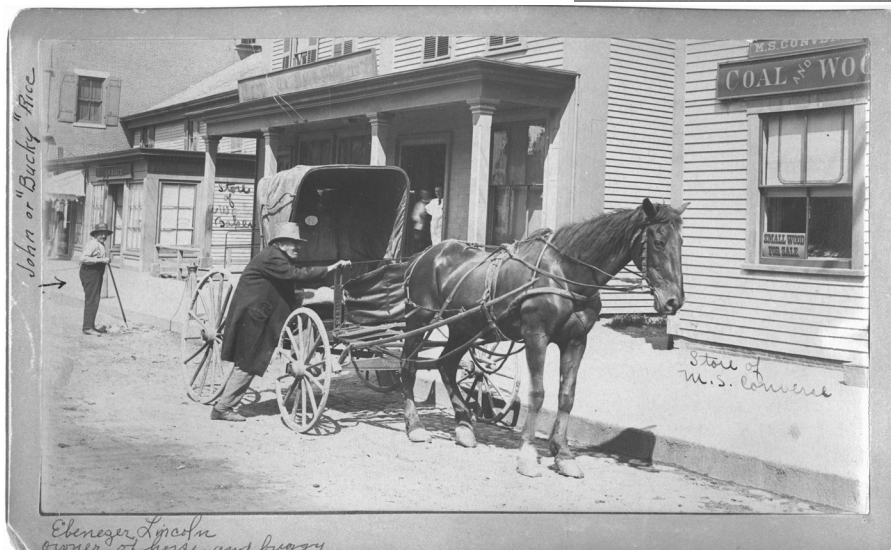


### Gilmore Wagon

Gilmore Brothers manufactured spring beds on the corner of Brigham and Cottage streets in the early 1870's. Company became the American Bedstead Co. on Union Street in 1890's

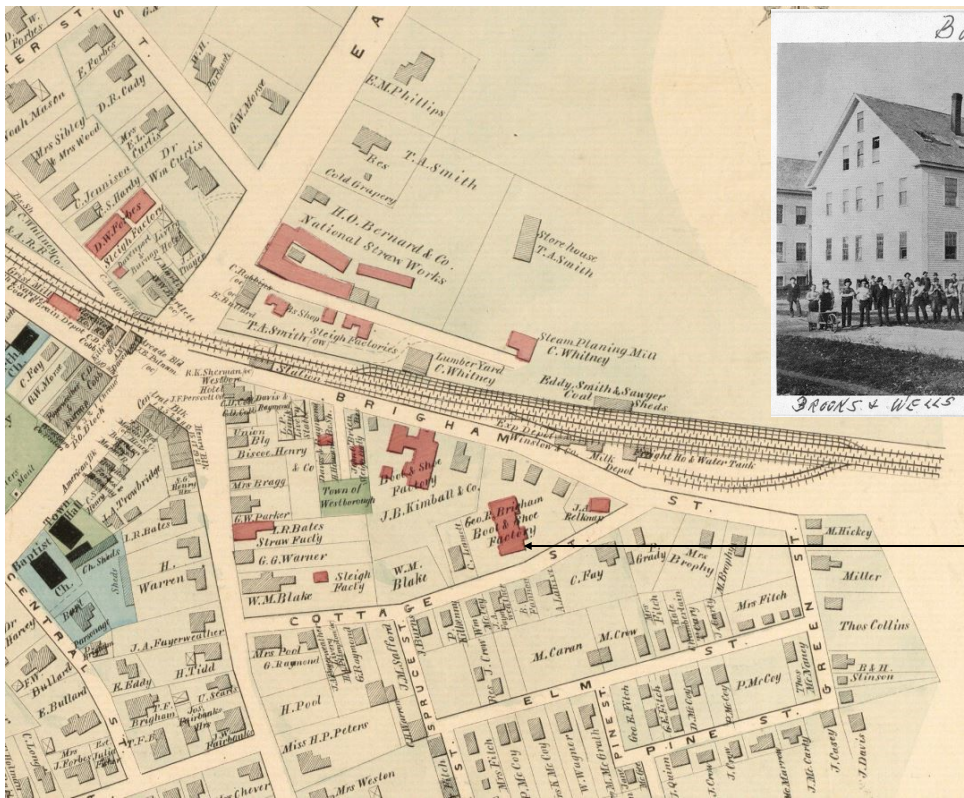


### Fire Wagon

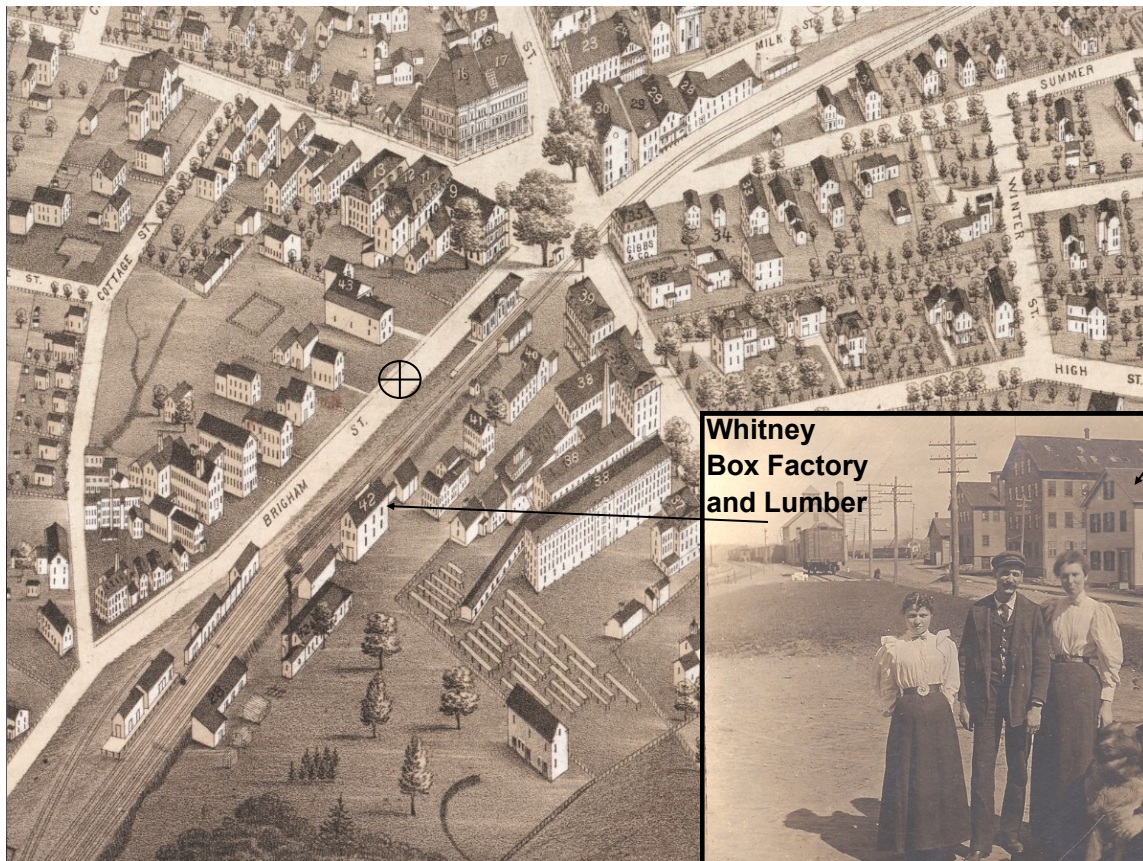
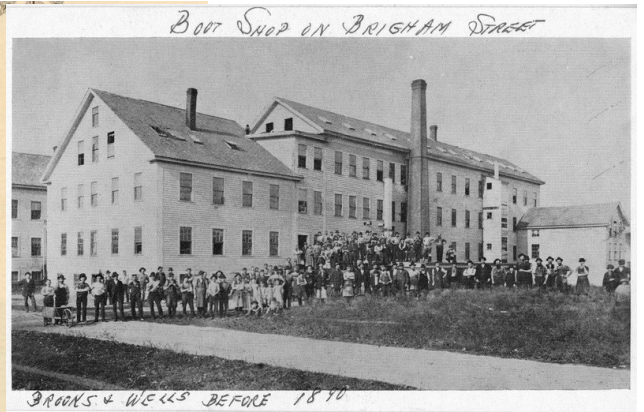


### Personal Transportation – Horse and Buggy



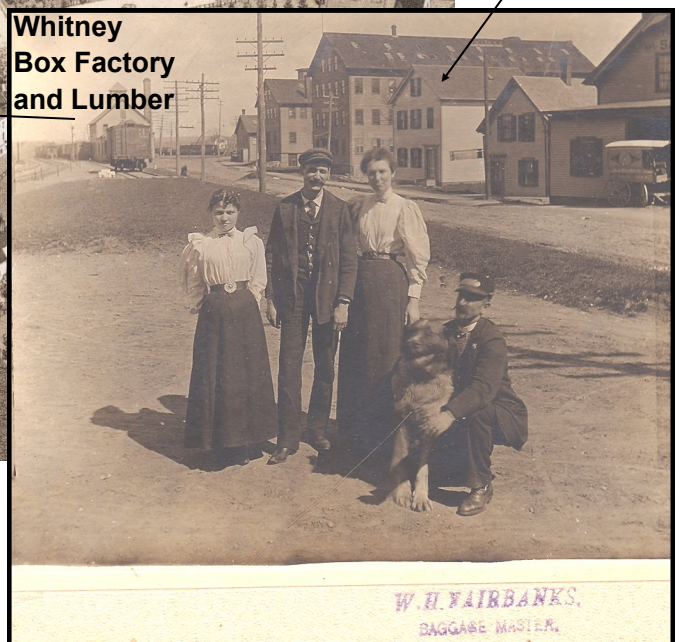


**Map: 1878 George H. Walker**



**Map: 1880 O. H. Bigelow**

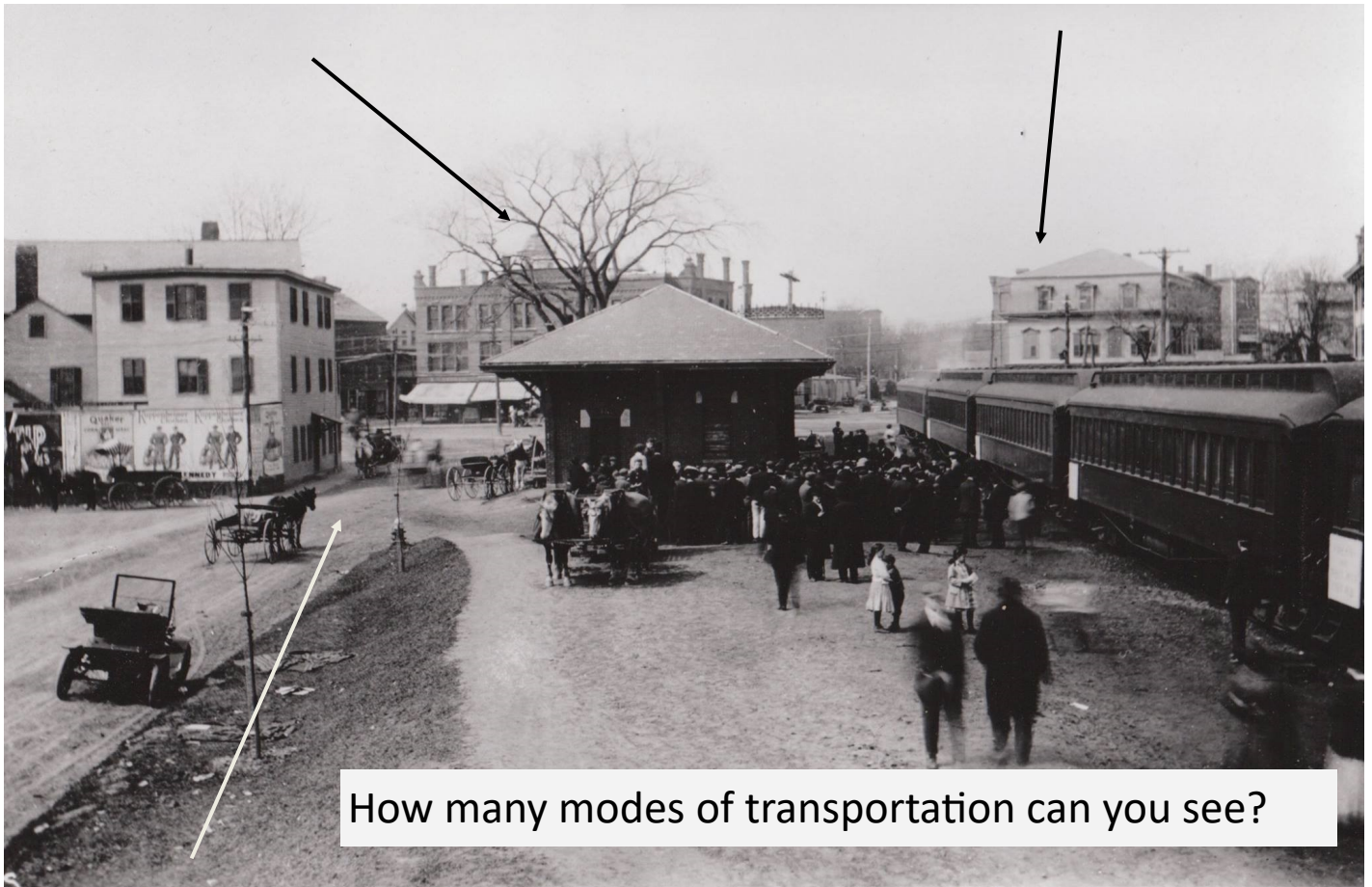
17 Brigham St.



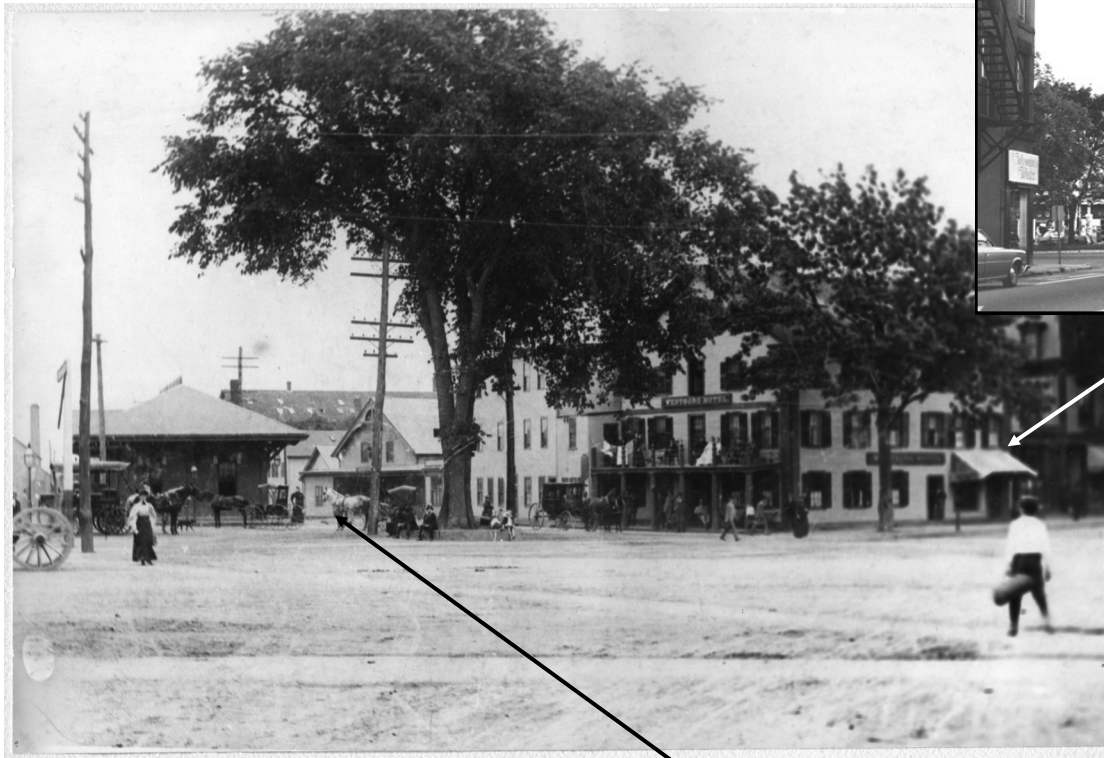


**Arcade Building (1890)**  
**1 West Main**

**Spaulding Block (1872)**  
**6- 12 East Main**



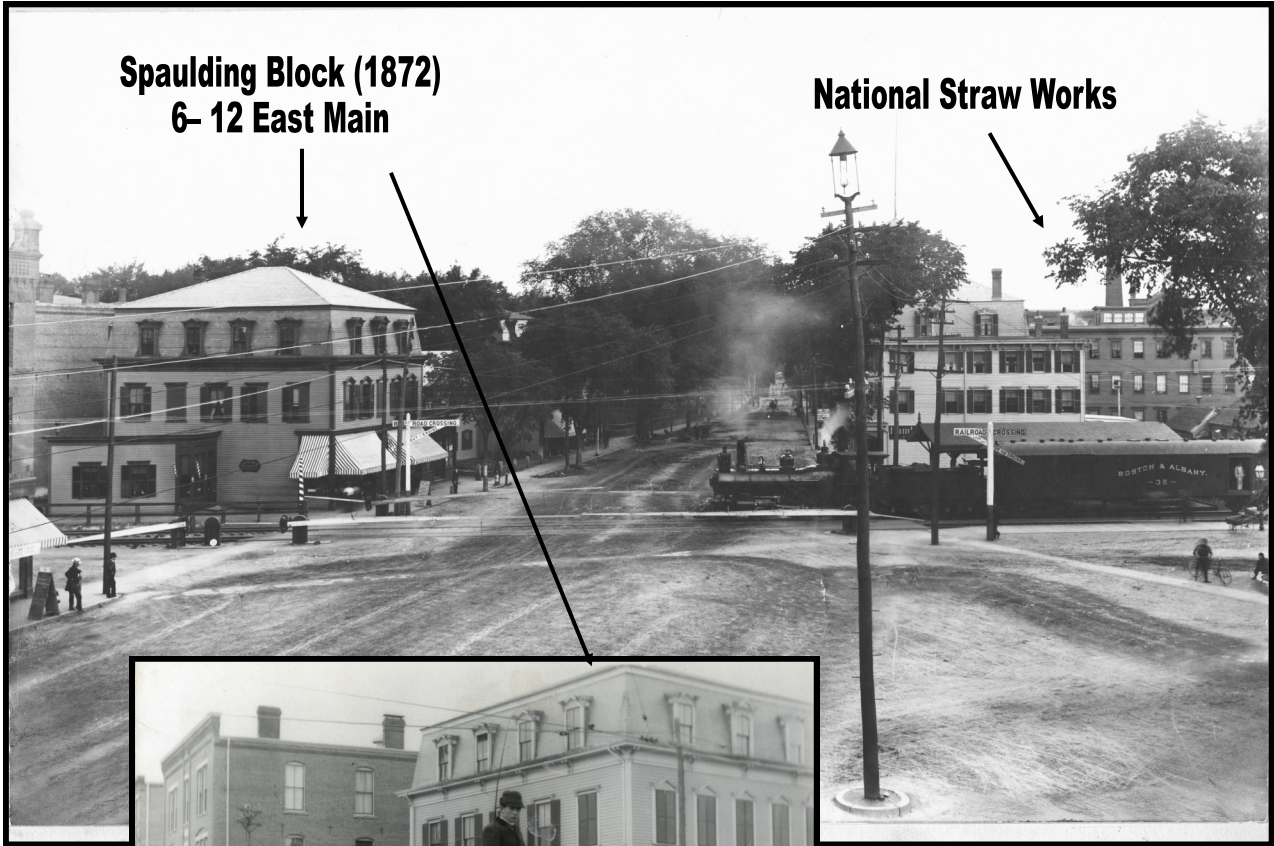
Brigham Street looking toward the rotary



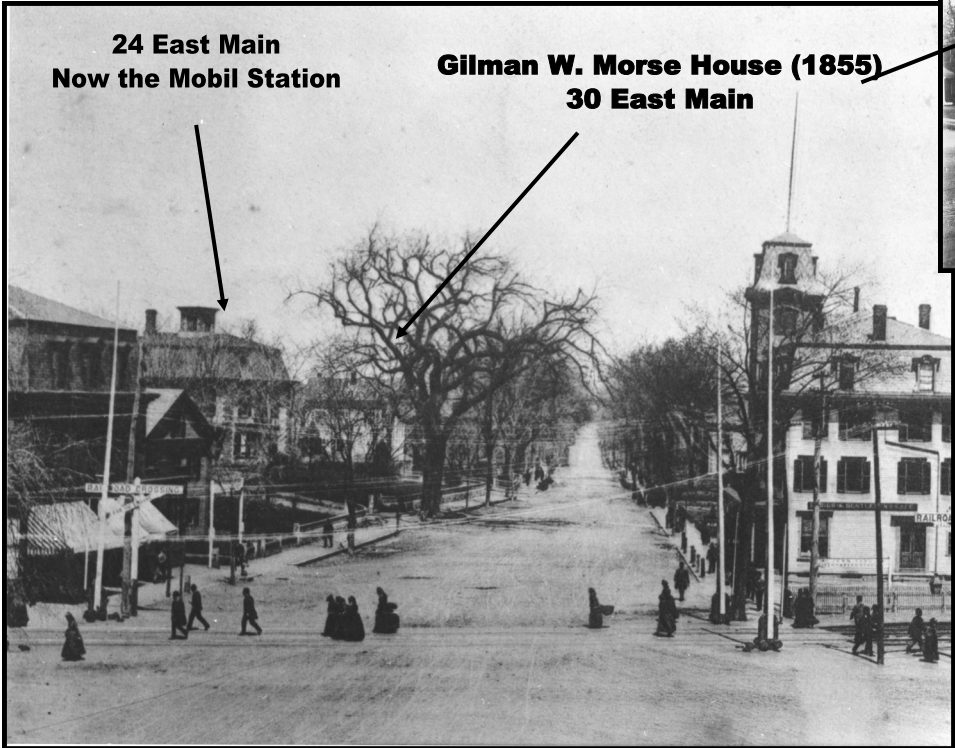
**2 South Street**  
**(Westborough Hotel)**

The rotary looking down Brigham Street

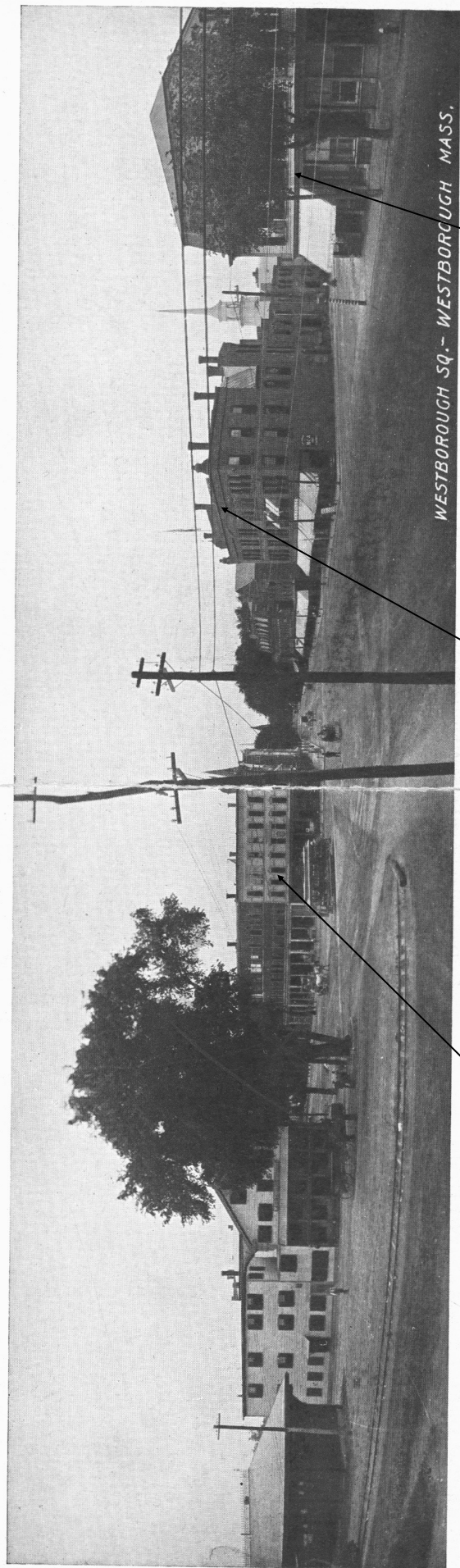




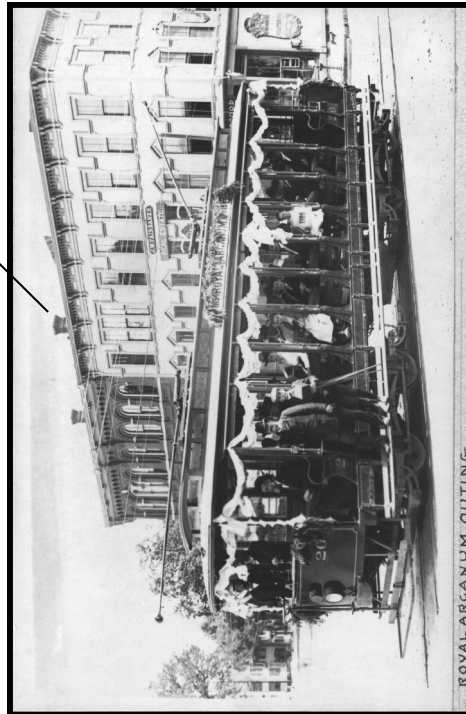
**Boston/Worcester RR line originates  
1834**



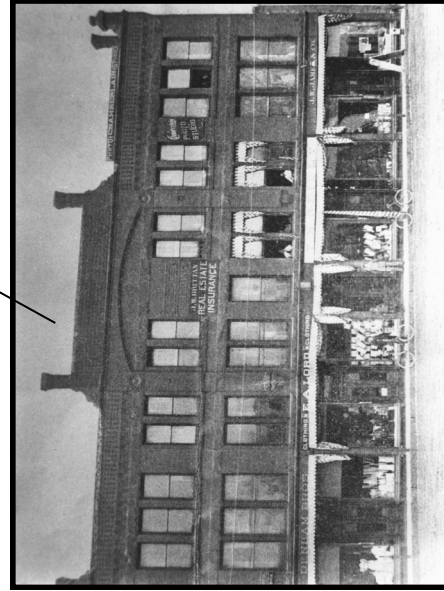




Westborough Square becomes the rotary in 1931



Henry Block (21 South) — Central Block (1-3 W Main)



Arcade Building—1 W. Main with parapet



Spaulding Block— 6 to 10 E. Main

# THE ROTARY



LAYING TROLLEY TRACKS 1903

Italian Railroad Workers, c 1900

Track running down Brigham and then down Milk Street to the left of the Arcade Building



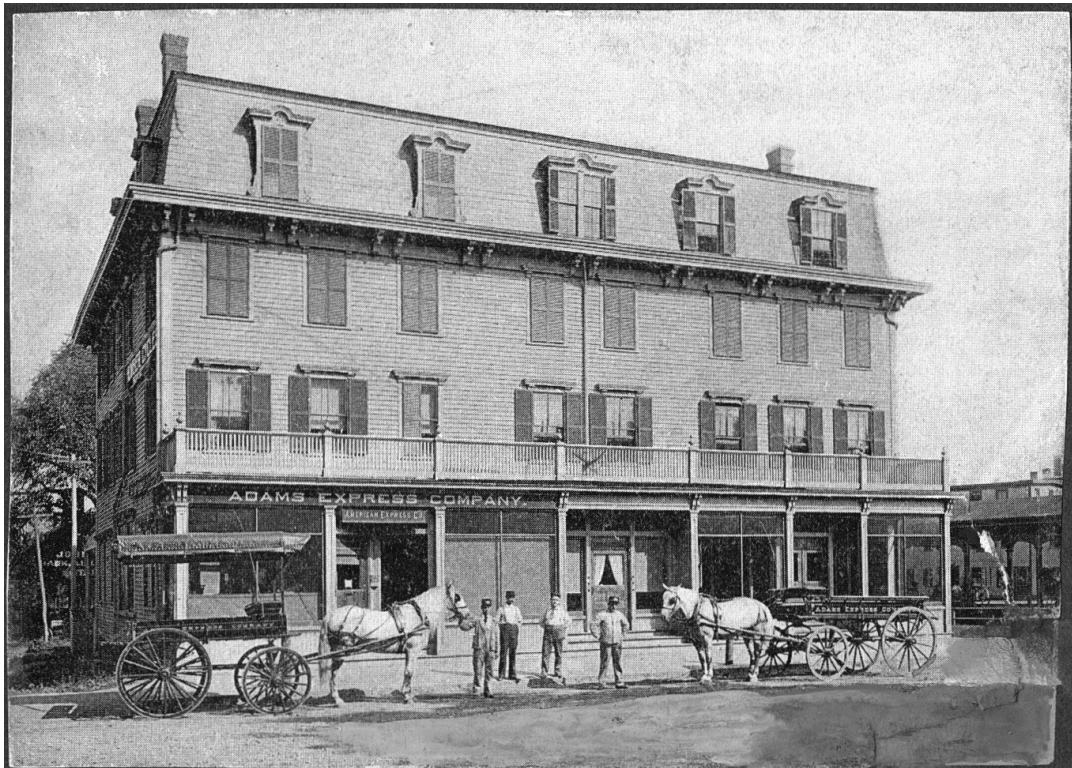
1 E. Main (old Post Office) circa 1928

War Memorial 1931





**National Straw Works, built 1871 burned 1917**



**Staple Block corner of Union and E. Main housed the Adams Express Co., Ford's Livery and Westboro Electric when it burned to the ground in 1917**

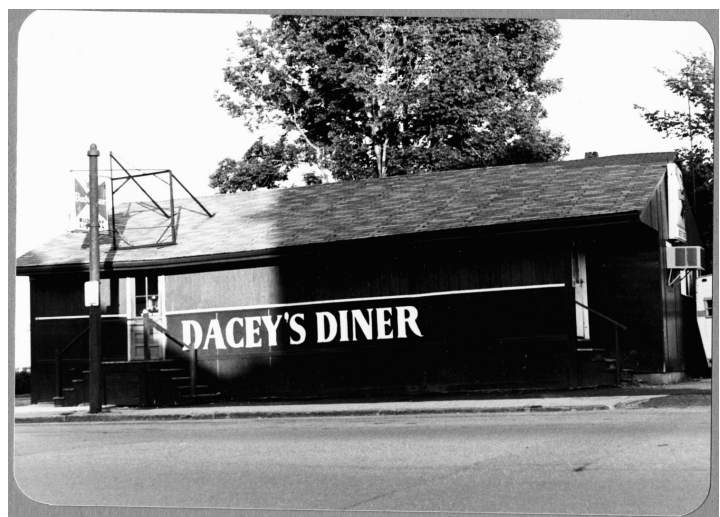




**Historic version, first generation, of a new fad—Food Trucks!**

**Buckley's factory, 281 Grafton Street, Worcester,  
was an early manufacturer**

**Prototype from the  
Worcester Lunch Car Company,  
2—8 Quinsigamond Ave,  
Worcester, MA**



**7 East Main  
now Westborough Korean Restaurant**



**17 to 21 East Main - Keating Building  
(Longfellow Block) circa 1914**



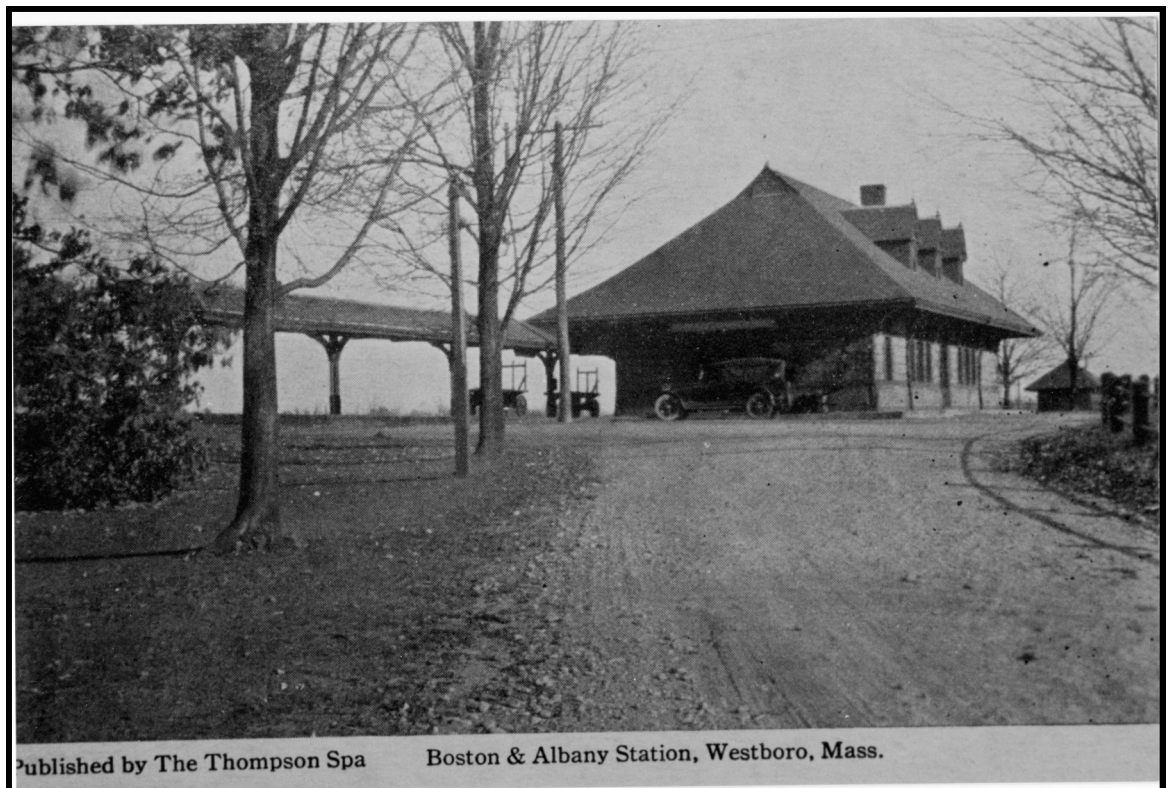
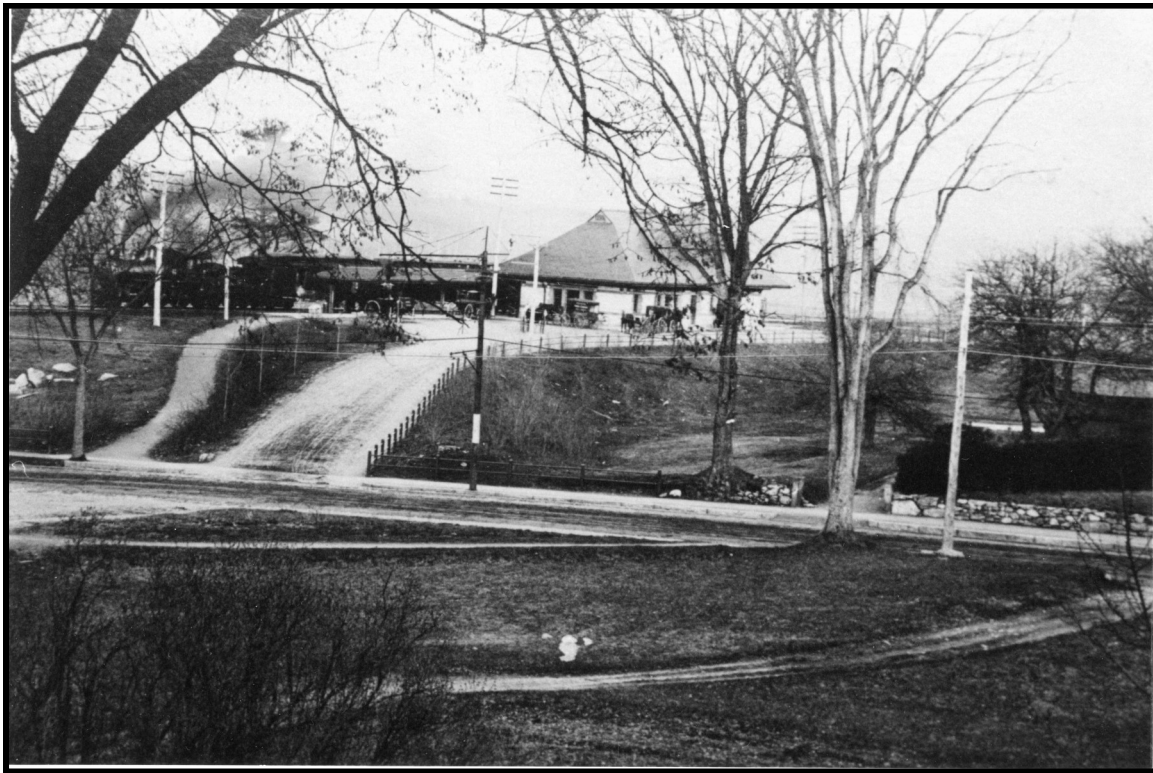
**Looking down East Main toward the infamous railroad bridge  
(note early auto infrastructure, Esso and Chevrolet circa 1930's)**

# Rise of the Motorized Vehicle

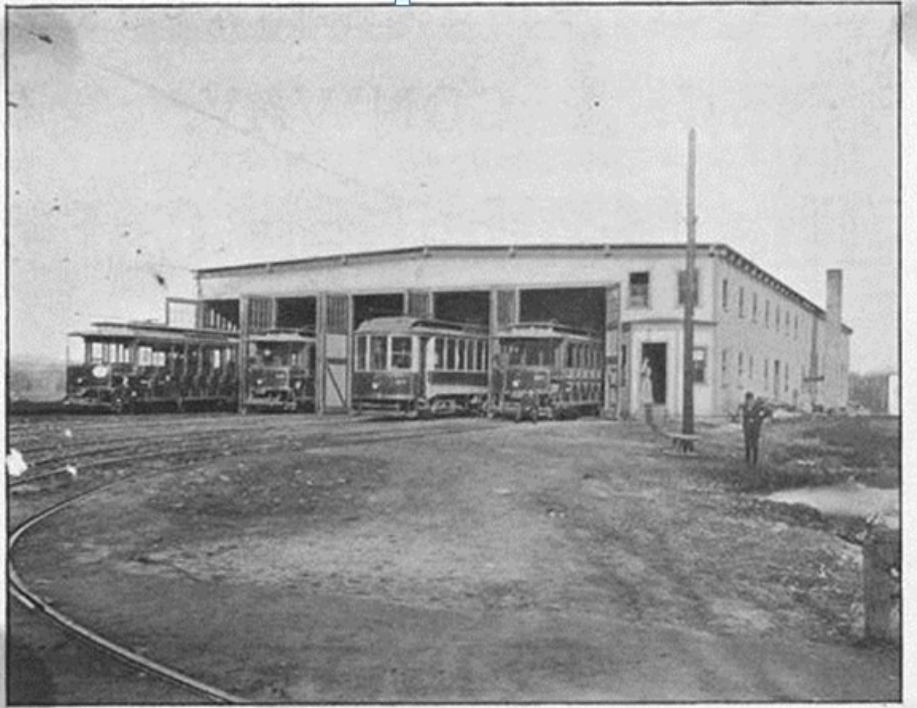




**Boston and Albany RR Station, circa 1899**  
**Architect Henry Hobson Richardson style**  
**31—33 E. Main**



Published by The Thompson Spa      Boston & Albany Station, Westboro, Mass.



**Boston and  
Worcester  
Electric Railway  
Trolley Barn  
circa 1901**

**53 East Main**

Car Barn Marlboro & Westboro Street Railway.



## Westborough Airport

Current site of Astra Zeneca, Otis Street



## Westborough's contemporary regional transportation system from the air

